



INSTRUCTIONS

GEK-33922D

GROUND DISTANCE RELAY TYPE CEYG53A

GENERAL  ELECTRIC

CONTENTS

	<u>PAGE</u>
INTRODUCTION.....	3
APPLICATION.....	3
RATINGS.....	5
TABLE I.....	5
TABLE II.....	6
OPERATING PRINCIPLES.....	6
MHO UNIT.....	6
RECEIVING, HANDLING AND STORAGE.....	6
CONSTRUCTION.....	7
CHARACTERISTICS.....	7
MHO UNIT.....	7
OPERATING TIME.....	7
CHOICE AND CALCULATION OF SETTINGS.....	7
ANGLE OF MAXIMUM REACH.....	7
REACH RATINGS.....	7
ZERO SEQUENCE CURRENT COMPENSATION.....	8
SAMPLE CALCULATION FOR GROUND MT SETTING.....	8
GROUND MT SETTING WITH ZERO SEQUENCE COMPENSATION.....	9
BURDENS.....	10
TABLE III.....	10
POTENTIAL CIRCUITS.....	10
TABLE IV.....	10
TABLE V.....	10
ACCEPTANCE TESTS.....	10
VISUAL INSPECTION.....	11
MECHANICAL INSPECTION.....	11
TABLE VI.....	11
ELECTRICAL CHECKS.....	11
MHO UNIT TESTS.....	11
TABLE VII.....	11
TABLE VIII.....	12
TABLE IX.....	12
TABLE X.....	12
TABLE XI.....	13
TARGET SEAL-IN UNIT.....	13
INSTALLATION PROCEDURE.....	13
LOCATION.....	13
MOUNTING.....	13
CONNECTIONS.....	13
VISUAL INSPECTION.....	13
MECHANICAL INSPECTION.....	13
ELECTRICAL TESTS.....	14
MHO UNITS.....	14
PERIODIC CHECKS AND ROUTINE MAINTENANCE.....	14
CONTACT CLEANING.....	14
SERVICING.....	14
TABLE XII.....	16
RENEWAL PARTS.....	16
APPENDIX I.....	17
DEFINITION OF SYMBOLS.....	17
VOLTAGE.....	17
CURRENT.....	17
DISTRIBUTION RATIOS.....	17
IMPEDANCE REACTANCE.....	18
MISCELLANEOUS.....	18
APPENDIX II.....	19
MINIMUM PERMISSIBLE REACH SETTING FOR THE CEYG53A.....	19
NO ZERO SEQUENCE CURRENT COMPENSATION.....	19
WITH ZERO SEQUENCE CURRENT COMPENSATION.....	20
APPENDIX III.....	22
WITHOUT COMPENSATION.....	22
SINGLE-PHASE-TO-GROUND FAULTS.....	22
DOUBLE-PHASE-TO-GROUND FAULTS.....	22
WITH COMPENSATION.....	23
SINGLE PHASE TO GROUND FAULTS.....	23
DOUBLE PHASE TO GROUND FAULTS.....	23

GROUND DISTANCE RELAY

TYPE CEYG53AINTRODUCTION

The CEYG53A is a three phase, high speed, single zone, mho type, directional distance ground relay. It consists of three single-phase units in one L2-D case with facilities for testing one unit at a time. One target and seal-in unit provides indication of operation for all three distance units. The transient over-reach characteristic of the CEYG53A relay has not been limited to the point where it is suitable for use as a first-zone relay. The relay was specifically designed for use as an overreaching device in directional comparison and transferred tripping schemes. Figure 3 shows the internal connections.

APPLICATION

The type CEYG53A ground mho relay is typically applied as the primary ground relay in directional comparison blocking schemes or in permissive overreaching transferred tripping schemes, employing separate primary and backup protection.

The ground mho units of the CEYG53A relay employ median voltage polarization. Therefore, the polarizing voltage will be at least 33 percent of normal even on close-in zero voltage line-to-ground faults. Since this is ample polarizing voltage for proper operation of the unit, no memory action is required. As long as the phase-to-neutral voltage remains in phase with the median voltage, the unit will remain a true mho unit. However, a nearby fault with arc resistance will result in the characteristic increasing in size and tipping its maximum torque angle towards the R axis. Thus the mho unit can tolerate more arc resistance in the fault which on most ground distance relay applications is beneficial.

The ground mho units will also respond to three phase faults. If this is objectionable, the relay can be made unresponsive to any fault not involving ground simply by adding a non-directional zero sequence fault detector.

The ground mho units are provided with separate current circuits for zero sequence current compensation. A tapped auxiliary current transformer is used to obtain the proper ratio of compensation. When zero sequence current compensation is used, the ground mho unit has essentially the same reach on single phase to ground faults as on three phase faults. If zero sequence compensation is NOT used, the ground mho unit reach is considerably foreshortened on single phase to ground faults. See Appendix II for the minimum permissible reach settings under both conditions.

In directional comparison schemes, two CEYG53A relays connected back-to-back are required at each terminal. These relays operate in conjunction with a carrier channel to provide high-speed protection against all single-phase-to-ground faults in the protected line section. One relay acts to stop carrier and trip for internal faults while the other initiates carrier blocking on external faults. If zero sequence current compensation is used on the carrier stopping and tripping units, it should also be used on the carrier starting units. This will facilitate the unit settings and insure that both units that must coordinate will be operating on the same torque level. In any event, the carrier starting unit should be set as sensitively as possible. This will tend to increase security since the presence of a carrier signal will block tripping.

In permissive overreaching transferred tripping schemes, one CEYG53A relay is required at each terminal. It acts as a combined transferred trip initiating and a permissive relay for ground faults in the protected line section.

The choice of whether or not to use zero sequence current compensation depends upon the protected line length and system conditions. When zero sequence current compensation is NOT used, the ground mho unit reach required may be about 2 to 3 times the positive sequence impedance of the line in order to provide the proper coverage. This then tends to make the ground mho unit more sensitive to operation on load conditions or on power swings. The use of zero sequence current compensation reduces the necessary

These instructions do not purport to cover all details or variations in equipment nor to provide for every possible contingency to be met in connection with installation, operation or maintenance. Should further information be desired or should particular problems arise which are not covered sufficiently for the purchaser's purposes, the matter should be referred to the General Electric Company.

To the extent required the products described herein meet applicable ANSI, IEEE and NEMA standards; but not such assurance is given with respect to local codes and ordinances because they vary greatly.

FIG. 1 (Not Available) Front View Relay Out Of Case

FIG. 2 (Not Available) Rear View Relay Out Of Case

ground mho unit reach setting to approximately 1.25 times the positive sequence impedance of the line and thus minimizes its response to load or power swings. This is true provided there is little or no mutual impedance present from a parallel line.

Whether or not zero sequence current compensation is used, the ground mho units may be subject to incorrect operation on ground faults immediately behind the relay terminals. This will be dependent upon the line impedance and system conditions. It may be necessary to limit the mho unit reach setting in order to avoid this false tripping. Appendix IIIA gives the limitations of the mho unit reach setting when zero sequence current compensation is NOT used. Appendix IIIB gives the limitations of the mho unit reach setting when zero sequence current compensation is used.

The system conditions which require the limitation of the mho unit reach, as described by Appendices IIIA and IIIB, are rather unusual. They occur when the zero sequence current contribution over the line to a fault behind the relay is larger than the positive sequence current contribution.





If the reach of the unfaulted phase units in the non-trip direction is an application limitation, a zero sequence directional overcurrent relay (CFPG16A) may be used to supervise the CEYG53 operation. This will permit tripping only when the fault is in the forward direction. The external connections are shown in Figure 4.

Since the CEYG53A is an extended range relay with three basic minimum reach settings, the best overall performance will be obtained if the highest basic minimum reach tap setting that will accommodate the desired setting is used.

RATINGS

The type CEYG53 relays covered by these instructions are available with a rating of 120 volt, 60 Hz. polarizing circuit, and 70 volts, 60 Hz. restraint circuit. The current circuit is rated 5 amperes continuous, with a one second rating of 115 amperes.

The basic minimum reach settings and adjustments ranges of the mho units are shown in Table 1.

TABLE 1		
	MHO UNIT	
BASIC MIN. REACH** (ϕ -N OHMS)	RANGE (ϕ -N OHMS)	ANGLE OF MAX. TORQUE
2/6 	2/60 	*60°/75°
1/3 	1/30 	*60°/75°

* Angle by which the operating current lags the phase-to-neutral restraint voltage. The mho unit may also be set for 75° lag. The reach at this angle will be 3 to 10% greater than that at 60°.

** In selecting the basic minimum reach tap or link setting always use the highest basic minimum reach compatible with the required reach setting of the unit.

The reach settings of the mho units can be adjusted in five percent steps by means of auto-transformer tap leads on the tap blocks at the right side of the relay.

The contacts of the CEYG53 relays will close and momentarily carry 30 amperes DC. However, the circuit breaker trip circuit must be opened by an auxiliary switch contact or other suitable means since the relay contact have no interrupting rating.

The 0.6/2 ampere target seal-in unit used in the CEYG53 relays has ratings as shown in Table II.

TABLE 11

TARGET SEAL-IN UNIT		
	0.6 Amp Tap	2.0 Amp Tap
Minimum Operating	0.6 amps	2.0 amps
Carry Continuously	1.5 amps	3.5 amps
Carry 30 Amps For	0.5 sec.	4 secs.
Carry 10 Amps For	4 secs.	30 secs.
DC Resistance	0.6 ohms	0.13 ohms
60 Cycle Impedance	6 ohms	0.53 ohms

OPERATING PRINCIPLES

MHO UNIT

The mho units of the Type CEYG53 relays are of the four-pole induction-cylinder construction (see Fig. 6) with schematic connections as shown in Fig. 7. The two side poles, which are energized by the phase-to-median voltage in phase with the phase-to-neutral voltage of the protected phase, produce the polarizing flux. The flux in the front pole, which is energized by a percentage of the phase-to-neutral voltage of the protected phase, interacts with the polarizing flux to produce restraint torque. The flux in the rear pole, which is energized by the line current of the protected phase, interacts with the polarizing flux to produce operating torque.

The torque at the balance point for the phase-A mho unit can therefore be expressed by the following equation.

$$\text{Torque} = 0 = KI_a' E_{am}' \cos (\alpha - \Delta) - TE_a' E_{am}'$$

where: K = design constant (basic ohmic reach tap)
 E_a' = Phase-A-to-neutral voltage at the relay location.
 E_{am}' = Phase B to median voltage at the relay.
 I_a' = Phase A current at the relay location
 α = Angle by which I_a' , E_{am}' lags
T = Restraint tap setting
 Δ = Angle of maximum torque (60 or 75°)

A separate testing plug can be inserted in place of the connecting plug to test the relay on the panel either from its own source of current and voltage, or from other sources. Or the relay can be drawn out and replaced by another which has been tested in the laboratory.

Figs. 1 and 2 show the relay removed from its drawout case with all major components identified. Symbols used to identify circuit components are the same as those which appear on the internal connection diagram in Fig. 3.

RECEIVING, HANDLING AND STORAGE

These relays, when not included as a part of a control panel, will be shipped in cartons designed to protect them against damage. Immediately upon receipt of a relay, examine it for any damage sustained in transit. If injury or damage resulting from rough handling is evident, file a damage claim at once with the transportation company and promptly notify the nearest General Electric Apparatus Sales Office.

Reasonable care should be exercised in unpacking the relay in order that none of the parts are damaged or the adjustments disturbed.

If the relays are not to be installed immediately, they should be stored in their original cartons in a place that is free from moisture, dust, and metallic chips. Foreign matter collected on the outside of the case may find its way inside when the cover is removed and cause trouble in the operation of the relay.

CONSTRUCTION

The type CEYG52 relays are assembled in the large-size, double-end L2D drawout case having studs at both ends in the rear for external connections. The electrical connections between the relay units and the case studs are made through stationary molded inner and outer blocks between which nests a removable connecting plug which completes the circuits. The outer blocks attached to the case have the studs for the external connections and the inner blocks have the terminals for the internal connections.

The relay mechanism is mounted in the steel framework called the cradle and is a complete unit with all leads being terminated at the inner block. This cradle is held firmly in the case with a latch at both top and bottom and by a guide pin at the back of the case. The connecting plug, besides making the electrical connections between the respective blocks of the cradle and case, also locks the latch in place. The cover, which is drawn to the case by thumbscrews, holds the connecting plugs in place.

CHARACTERISTICS

The operating characteristics of the mho units in the CEYG53 relay may be represented on an R-X impedance diagram as shown in Fig. 8. It should be noted that these are steady-state characteristics and are for rather specific fault conditions as described below.

MHO UNIT

The mho unit has a circular characteristic which passes through the origin and defines the angle of maximum torque of the unit, which occurs when linecurrent (I_a for example) lags the polarizing voltage (E_{am} for example) by 60° or 75° . Since there is essentially no phase shift in the line-to-neutral voltage for a single-phase-to-ground fault, this maximum torque angle (i.e. maximum reach angle) occurs when the line current lags the phase-to-neutral voltage by 60° , which is the condition represented in Fig. 8.

OPERATING TIME

The operating time characteristics of the mho units in the CEYG53 relay are determined by a number of factors such as the basic minimum reach setting of the unit, fault current magnitude, and the ratio of fault impedance to the reach of the unit.

Typical time curves for the mho unit are shown in Fig. 9 for several ratios of fault impedance to unit reach. These curves are for a single-phase-to-ground fault where the fault impedance (Z_{FAULT}) seen by the unit can be calculated as described in Appendix II. Note in the figure that the fault current scale changes with the basic minimum reach setting.

CHOICE AND CALCULATION OF SETTINGS

The required settings of the mho distance units in the CEYG53A relay must be determined prior to the installation of the relays. Three settings are required.

1. Angle of maximum reach.
2. Reach setting including the basic minimum reach tap and the percent voltage tap.
3. The zero sequence current compensation setting on the auxiliary CT if this is used.

ANGLE OF MAXIMUM REACH

Angles of maximum reach settings between 60° and 75° lag are available. The factory setting is 60° and it is recommended that this degree setting be used wherever possible because it will accommodate more fault resistance than the 75° degree setting. This is of particular importance with ground faults since they tend to include higher fault resistance than do phase faults. Changing the maximum torque angle from 60° to 75° changes the basic minimum taps as described in the section on ratings.

REACH SETTINGS

The ground mho units must be set with a reach great enough to insure tripping for faults at the far end of the line. The reach settings will be different whether or not zero sequence current compensation is used. With compensation and no mutual coupling with a parallel line, the impedance seen by MT will be equal to the positive sequence line-to-neutral impedance from the relay to the fault. If mutual coupling is present, the apparent impedance seen by MT will usually be greater than the positive sequence line-to-

neutral impedance. When zero sequence current compensation is NOT used, the apparent impedance seen by MT will probably be 1.7 or more times the positive sequence line-to-neutral impedance. Instructions are given in Appendix II for calculating the minimum permissible reach setting for the mho unit to insure adequate reach.

At some relay locations, depending upon system impedances and the positive and zero sequence current distribution factors, C and C_0 , ground distance mho units connected in the unfaulted phases can respond to the apparent impedance of single or double-phase-to-ground faults. This is true for external faults as well as internal faults. To avoid this incorrect response, the ground mho reach must not be set so large that it includes this apparent impedance. Instructions are given in Appendix III for determining the maximum permissible reach setting (minimum permissible tap setting) to avoid this condition.

The typical CEYG53A relay has three basic minimum reach tap settings, either 1, 2, 3 or 2, 4, 6 ohms. In order to obtain optimum performance from the MT units, use the highest basic minimum reach tap that will accommodate the desired setting.

ZERO SEQUENCE CURRENT COMPENSATION

When zero sequence current compensation is used, the auxiliary CT setting K' is calculated as follows:

$$K' = \frac{X_0' - X_1'}{3X_1'} \times 100$$

where:

K'	=	compensation tap setting in percent
X_0'	=	zero sequence reactance of the line
X_1'	=	positive sequence reactance of the line

Note that the auxiliary compensating CT has only 10 percent steps. It should be set to the next higher tap if the calculation does not come out very close to a 10 percent tap. This will make the mho unit over-reach slightly which would be more desirable than underreach.

SAMPLE CALCULATION FOR GROUND MT SETTING

In order to illustrate the calculations required, assume the portion of a transmission system shown in Figure 5.

Consider the protected line to be line #1 having the following characteristics:

$$Z_1' = 24.0 \angle 79^\circ \text{ primary ohms}$$

$$Z_0' = 72.0 \angle 75^\circ \text{ primary ohms}$$

$$Z_{0m} = 14.4 \angle 75^\circ \text{ primary ohms}$$

$$\text{CT Ratio} = 600/5$$

$$\text{PT Ratio} = 1200/1$$

$$Z_1' = 2.4 \angle 79^\circ \text{ secondary ohms} = 0.42 + j2.35$$

$$Z_0' = 7.2 \angle 75^\circ \text{ secondary ohms} = 1.86 + j6.93$$

$$Z_{0m} = 1.4 \angle 75^\circ \text{ secondary ohms} = 0.36 + j1.35$$

Following is a worked example for the relay settings at breaker A assuming first that zero sequence current compensation is NOT used. Determine first the minimum permissible reach setting for the MT unit using equation II-c from Appendix II. The following relay quantities are obtained from a system study for fault F3.

$$C_0 = 0.17$$

$$C = 0.20$$

$$I_a' = 13.7 \text{ amps secondary (600/5 CT's)}$$

$$I_0' = 4.6 \text{ amps secondary (600/5 CT's)}$$

$$I_0'' = -0.88 \text{ amp secondary based on the protected line CT ratio of 600/5. Note negative sign because } I_0'' \text{ in line \#2 flows in a direction opposite to that of } I_0' \text{ in line \#1.}$$

Substituting values into equation IIC and assuming a 4 ohm basic reach (TB) setting, the maximum permissible tap setting (Tmax) is 82 percent.

Next determine the maximum permissible reach setting for the relays at breaker A using the Appendix IIIA-a and IIIA-b equations and the curve of Figure 15 for the 60 degree maximum reach angle setting. Note that the curves in Fig. 15 are for a 1.0 ohm basic tap but values of K_Q thus obtained be substituted directly in equation IIIA-a. The fault is F2 in Figure 17 and the relay quantities for this fault are as follows:

$$C = 0.27$$

$$C_0 = 0.11$$

$$Z_1 = 0.874 \angle 82^\circ \text{ secondary ohms}$$

$$Z_0 = 1.05 \angle 78^\circ \text{ secondary ohms}$$

$$Z_0/Z_1 = 1.2$$

$$K_Q = 16.5$$

Equation IIIA-a yields - 6.0%

Equation IIIA-b yields - 9.7%

Since both of these values are negative, there is no limitation on the mho tap setting other than the normal 10 percent minimum.

GROUND MT SETTING WITH ZERO SEQUENCE COMPENSATION

For the relays at terminal A, the zero sequence current compensation tap setting K' is as follows:

$$\begin{aligned} K' &= \frac{X_0' - X_1'}{3X_1'} \\ &= \frac{6.93 - 2.35}{3(2.35)} \\ &= .65 \text{ per unit} \end{aligned}$$

$$\text{Set } K' = .70 \text{ per unit (i.e. 70\% tap)}$$

Determine now the permissible reach setting using equation II-k of Appendix II and the relay quantities previously determined for fault F3 in Figure 17. This yields a maximum permissible tap setting (Tmax) at 65%.

Next determine the maximum permissible reach settings using equations IIIB-a and IIIB-b and the relay quantities previously determined for fault F2 in Figure 17.

Equation IIIB-a yields 2.7%

Equation IIIB-b yields 4.3%

Since both of these values are less than the normal 10 percent minimum tap setting limit, they impose no further restrictions on the relay application.

The same procedure should now be followed with respect to the relay settings at breaker B with system values as viewed from that location.

BURDENS

CURRENT CIRCUITS

The current coil burdens imposed on each current transformer at 5 amperes, 60 Hertz are listed in Table III.

TABLE III

RELAY STUDS	FREQ. HZ	R	X	P.F.	W.	V.A.
3 - 4	60 HZ	.096	.020	.98	4.6	4.7
5 - 6	60 HZ	.096	.020	.98	4.6	4.7
7 - 8	60 HZ	.096	.020	.98	4.6	4.7
9 - 10	60 HZ	.288	.060	.98	13.8	14.1

POTENTIAL CIRCUITS

The maximum potential burden imposed on each potential transformer at rated voltages, 120 volts on the polarizing circuit and 70 volts on the restraint circuit are shown in table IV. Data taken with restraint leads in 100%.

TABLE IV

CIRCUIT	R	X	P.F.	WATTS	V.A.
RESTRAINT	368	+J230	.846	9.8	11.6
POLARIZING	1024	J0	1	10.5	10.5

The potential burden at tap settings less than 100 percent can be calculated from the following formula.

$$VA = (a + Jb) \left[\frac{\text{Relay Tap Setting (\%)}}{\text{Input Tap Setting (\%)}} \right]^2 + (c + Jd)$$

The terms (a + Jb) and (c + Jd) represent the burdens of the potential circuits expressed in watts and vars with the taps set at 100%. The values for 60 HZ relays are given in table V.

TABLE V

CIRCUIT	TERM WATTS + J VARS	WATTS + J VARS
RESTRAINT	(a + Jb)	9.8 + J 6.15
POLARIZING	(c + Jd)	10.5 + J 0

The total burden can be obtained by adding the watts and vars for each unit as determined by the above formula and converting the total to volt-amperes for the tap setting used.

ACCEPTANCE TESTS

Immediately upon receipt of the relay an INSPECTION AND ACCEPTANCE TEST should be made to insure that no damage has been sustained in shipment and that the relay calibrations have not been disturbed. If the examination or test indicates that readjustment is necessary, refer to the section on SERVICING.

VISUAL INSPECTION

Check the nameplate stamping to insure that the model number and rating of the relay agree with the requisition.

Remove the relay from its case and check that there are no broken or cracked molded parts or other signs of physical damage, and that all screws are tight.

MECHANICAL INSPECTION

1. It is recommended that the mechanical adjustments in Table VI be checked.
2. There should be no noticable friction in the rotating structure of the mho units.
3. Make sure control springs are not deformed and spring convolutions do not touch each other.
4. With the relay well leveled in its upright position the trip contacts must be open.
5. The armature and contacts of the seal-in unit should move freely when operated by hand. There should be at least 1/32" wipe on the seal-in contacts.
6. Check the location of the contact brushes on the cradle and case blocks against the internal connection diagram for the relay. Make sure that the shorting bars are in their proper location on the case block.

TABLE VI

CHECK POINTS	MHO UNIT
ROTATING SHAFT END PLAY	.005 - .008 INCH
CONTACT GAP	.120 - .130 INCH
CONTACT WIPE	.003 - .006 INCH

ELECTRICAL CHECKS

Before any electrical checks are made on the mho units, the relay should be connected as shown in Fig. 11 and allowed to warm up for approximately 15 minutes with the potential circuits alone energized at rated voltage and with the restraint tap leads set at 100%. The units were warmed up prior to factory adjustment and if rechecked when cold will tend to underreach by 3 or 4 percent. Accurately calibrated meters are, of course, essential.

MHO UNIT TESTSA. CONTROL SPRING

With the relay connected per figure 10- Test 1, disconnect the restraint leads from the autotransformers. Set the voltage at 104 volts and the current at 5 amperes. Set the phase shifter so current lags the voltage by 60 degrees, then set the conditions as shown in Table VII.

TABLE VII

RANGE OF UNITS	REACH LINK A (POS.) B		ANGLE LINK POSITION	VOLTAGE SETTING	CURRENT PICKUP
1/3 Ω	1	2	60°	5V	1.4 - 2.0A
2/6 Ω	2	4	60°	5V	.7 - 1.0A

Spring adjustment is accomplished by turning the notched sprocket directly above the control spring. Turning it to the right increases the current pickup, to the left decreases the current pickup.

Do this test on all units by changing the stud connections shown in figure 10 before proceeding with further tests.

B. ANGLE OF MAXIMUM TORQUE (75° POSITION)

Connect the relay per figure 11. Set the conditions as shown in table VIII.

The object of this test is to set the R_{11} , R_{12} and R_{13} rheostats in the polarizing circuits so that the angle of maximum torque occurs when the operating current lags the polarizing voltage by 75 degrees.

TABLE VIII

UNIT RANGE	REACH LINKS	ANGLE LINK	TRANSF. SET	V ₁ SET	V ₂ SET	I SET	ADJUST		
							TOP	MID.	BOT.
1/3 \curvearrowright	3 \curvearrowright	75°	50%	104V	70V	12A	R ₁₁	R ₁₂	R ₁₃
2/6 \curvearrowright	6 \curvearrowright	75°	50%	104V	70V	6A	R ₁₁	R ₁₂	R ₁₃

The angle of maximum torque is defined as:

$$\angle \text{Max. Tor.} = \frac{\angle \text{Min. Tor.} + \angle \text{Min. Tor.}}{2}$$

C. ANGLE OF MAXIMUM TORQUE (60° POSITION)

Use the same connections as in section B except adjust R_{g1} , R_{g2} and R_{g3} rheostats for an angle of maximum torque of 60 degrees lag. Conditions are shown in Table IX.

TABLE IX

UNIT RANGE	REACH LINKS	ANGLE LINK	TRANSF. SET	V ₁ SET	V ₂ SET	I SET	ADJUST		
							TOP	MID.	BOT.
1/3 \curvearrowright	3 \curvearrowright	60°	50%	104V	70V	14A	R _{g1}	R _{g2}	R _{g3}
2/6 \curvearrowright	6 \curvearrowright	60°	50%	104V	70V	7A	R _{g1}	R _{g2}	R _{g3}

Complete tests on all three units before proceeding with further tests.

D. MHO UNIT REACH (AT 60° LAG)

Same connections as in B and C. The reach adjustments are made with X_{11} , X_{12} and X_{13} . Phase angle meter set for 60 degree lag.

TABLE X

UNIT RANGE	REACH LINKS	ANGLE LINK	TRANSF. SET.	V ₁ SET	V ₂ SET	I SET	ADJUST		
							TOP	MID.	BOT.
1/3 \curvearrowright	3 \curvearrowright	60°	50%	104V	70V	11.3 11.9	X ₁₁	X ₁₂	X ₁₃
2/6 \curvearrowright	6 \curvearrowright	60°	50%	104V	70V	5.7-6.0	X ₁₁	X ₁₂	X ₁₃

Set all units per table X. Recheck paragraph C and adjust if necessary because the adjustments of the angle of maximum torque and reach have an effect on each other, therefore, both tests should be in limits without further adjustments before proceeding to the next tests.

E. REACH TAP CHECKS

With connections as in D above, phase angle meter set at 60 degrees lag. Move all three unit reach links at the same time so all units are the same reach value. The reach tap pickup will be as shown in table XI.

TABLE XI

UNIT RANGE	REACH LINKS		ANGLE LINK	TRANSF SET	V ₁ SET	V ₂ SET	I RANGE AMPS
	A	B					
1/3 Ω	1	0	60°	50%	104V	35V	16.8-18.2
1/3 Ω	0	2	60°	50%	104V	70V	16.8-18.2
2/6 Ω	2	0	60°	50%	104V	70V	16.8-18.2
2/6 Ω	0	4	60°	50%	104V	70V	8.4-9.1

Connect the current leads to test 2, figure 11 and check the reach taps as above to check the zero sequence compensating windings on all three units. They should be $\pm 3\%$ of the calibration value paragraph D. Recheck the control spring setting as in paragraph A. A slight readjustment at this time will not disturb the previous tests.

TARGET SEAL-IN UNIT

The target seal-in unit has an operating coil tapped at 0.6 or 2.0 amperes. The relay is shipped from the factory with the tap screw in the 2.0 ampere position. The operating point of the seal-in unit can be checked by connecting from a D-C source (+) to stud 11 of the relay and from stud 1 through an adjustable resistor and ammeter back to (-). Connect a jumper from stud 14 to stud 11 also so that the seal-in contact will protect the mho unit contact. Then close the mho contact by hand and increase the D-C current until the seal-in unit operates. It should pickup at tap value or slightly lower. Do not attempt to interrupt the D-C current by means of the mho unit contact.

If it is necessary to change the tap setting, say from 2.0 to 0.6 amps, proceed as follows: Remove the tap screw from the left-hand contact strip and insert it in the 0.6 amp position of the right hand contact strip. Then remove the screw from the 2.0 amp tap and put it in the vacant position in the left hand plate. If this procedure is followed the contact adjustments will not be disturbed.

INSTALLATION PROCEDURE

LOCATION

The location of the relay should be clean and dry, free from dust, excessive heat and vibration, and should be well lighted to facilitate inspection and heating.

MOUNTING

The relay should be mounted on a vertical surface. The outline and panel drilling dimensions are shown in Figure 12.

The outline panel drilling and internal connections for the auxiliary compensating transformers are shown in Figures 12 and 13.

CONNECTIONS

The internal connections of the CEYG53 relay are shown in Figure 3. An elementary diagram of typical external connections is shown in Figure 4.

VISUAL INSPECTION

Remove the relay from its case and check that there are no broken or cracked component parts and that all screws are tight.

MECHANICAL INSPECTION

Recheck the adjustments mentioned under Mechanical Inspection section of ACCEPTANCE TEST.

ELECTRICAL TESTS

The manner in which reach settings are made on the CEYCSLA Mho units is briefly discussed in the section titled SAMPLE CALCULATIONS FOR SETTINGS. Examples of the calculation of typical settings are given in that section. It is the purpose of the electrical tests in this section to check the mho unit ohmic pickup settings which have been made for a particular line section.

MHO UNITS

The mho units are set for the calculated reach and checked by means of the connections shown in Figure 10 and 11. With V1 set for 104V and V2 set for 70V the current required to just close the contacts may be calculated from the following equation:

$$I = \frac{V2}{(B.M.T.) \sqrt{100/E^2 - 2 \cos \theta}} \pm 10\%$$

Where:

- V2 = voltage (70 volts)
- B.M.T. = Basic minimum tap of mho unit
- E² = Restraint tap setting
- θ = Difference between the angle of maximum torque (either 60 or 75°) and the test being used.

The mho unit angle of maximum torque may be checked by the method as shown in the acceptance tests.

The mho unit, compensating windings can be checked in a manner similar to that previously described except the current is supplied to studs 9 and 10.

PERIODIC CHECKS AND ROUTINE MAINTENANCE

In view of the vital role of protective relays in the operation of a power system it is important that a periodic test program be followed. It is recognized that the interval between periodic checks will vary depending upon environment, type of relay, and the user's experience with periodic testing. Until the user has accumulated enough experience to select the test interval best suited to his individual requirement it is suggested that the points listed under INSTALLATION PROCEDURE be checked once a year.

CONTACT CLEANING

For cleaning fine silver contacts, a flexible burnishing tool should be used. This consists of a flexible strip of metal with an etched-roughened surface resembling in effect superfine file. The polishing action is so delicate that no scratches are left, yet it will clean off any corrosion thoroughly and rapidly. Its flexibility insures the cleaning of the actual points of contact. Do not use knives, files, abrasive paper or cloth of any kind to clean relay contacts.

SERVICING

If it is found during the installation or periodic tests that the unit calibrations are out of limits, they should be recalibrated as outlined in the following paragraphs. It is suggested that these calibrations be made in the laboratory. The circuit components listed below, which are normally considered as factory adjustments, are used in recalibrating the units. These parts may be located from Fig. 1 and 2.

	TOP	MID.	BOT
75° PHASE ANGLE ADJUST	R ₁₁	R ₁₂	R ₁₃
60° PHASE ANGLE ADJUST	R ₉₁	R ₉₂	R ₉₃
REACH AT 60° ADJUST	X ₁₁	X ₁₂	X ₁₃

A. DIRECTIONAL TESTS

1. Connect the relay per Figure 11, Test 1. Adjust the control springs so that the moving contacts float between their stationary contacts and backstops.
2. Set the unit for the particular relay's basic minimum reach as follows:

MIN. REACH RANGE	MIN. REACH SETTING	LINK A	LINK B	60/75 LINK	RESTR. TAP	V ₁ SET	V ₂ SET	I SET AMPS
1/2/3	3	1	2	60°	100%	104	-	5
2/4/6	6	2	4	60°	100%	104	-	5

Set the phase shifter so that the phase angle meter reads 300 degrees.

3. Remove the potential voltages and short studs 15, 16, 17 and 18.
4. Then increase the current to 60 amperes, very rapidly so the unit does not overheat, and observe that the contact remains open over the range of current from zero to 60 amperes. A slight adjustment of the core will be necessary if this test fails. An explosion view of the unit, core and associated parts is shown in Figure 14. The core can be rotated with a special wrench (Catalog No. 0178A9455 Pt-1) which engages the "D" nut without the need to loosen the other parts of the core assembly. The core locking mechanism consists of the "F" nut, two "C" wave tension washers and the core threaded stud. Therefore, the core can be rotated 360 degrees and still remain secured to the frame.
5. Remove the short from studs 15, 16, 17 and 18. Connect potential leads as shown in Figure 11 test 1. Remove the transformer restraint leads and short them together. Energize with V₁ at 104 volts, the unit must have a slight opening bias. Readjust the core if necessary. Test paragraphs 3, 4, and 5 until the unit passes these tests without any further adjustments.
6. Leave the restraint taps unshorted with the phase angle meter at 300 degrees. Set V₁ for five volts and adjust the control spring so that the contact just closes for the values given below:

MIN. REACH RANGE	MIN. REACH SETTING	LINK A	LINK B	60/75 LINK	RESTR. TAP	V ₁ SET	V ₂ SET	I SPRING SETTING AMPS
1/2/3	3	1	2	60°	Short	5	-	1.4 to 2.0
2/4/6	6	2	4	60°	Short	5	-	0.7 to 1.0

7. With the settings described in step 6, increase the current from spring setting to 60 amps. The contacts should remain closed for the entire range.
8. Reverse the current in the relay. The contact should remain open from 0 to 63 amperes.

B. ANGLE OF MAXIMUM TORQUE (75°)

With the test connections as shown in Figure 11, adjust R₁₁ for the top unit, R₁₂ for the middle unit and R₁₃ for the bottom unit.

1. Set V₂ for 70 volts; V₁ for 104 volts.
2. Set the reach links in the 6 ohm position for the long reach relay and in the 3 ohm position for the standard reach relay.
3. Set the angle of maximum torque links in the 75 degree positions.
4. Set the restraint taps at 50 percent.
5. Set I at 8 amperes for the 6 ohm relay and 15 amperes for the 3 ohm relay. Adjust R₁₁, R₁₂ or R₁₃ to obtain an angle of maximum torque of 75 degrees lag.


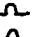
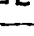
C. ANGLE OF MAXIMUM TORQUE OF 60 DEGREES LAG

1. Put the angle links in 60° position.
2. With the same connections as in section B except adjust R91 for the top unit, R92 for the middle unit and R93 for the bottom unit to obtain an angle of maximum torque of 60 degrees lag.
3. Restraint taps in 50 percent.
4. V₁ at 104 volts, V₂ at 70 volts, I at 10 amperes for the 6 ohm unit and 15 amps for the 3 ohm units.

D. REACH ADJUSTMENT AT 60 DEGREES LAG (RESTRAINT TAPS IN 50 PERCENT)

1. Set V₁ at 104 volts, V₂ at 70 volts, I at 5 amperes.
2. Set phase angle meter to 60 degrees lag.
3. Adjust X₁₁ for the top unit, X₁₂ for the middle unit and X₁₃ for the bottom unit to obtain a pickup of 5.65 to 6.0 amperes.
4. Cross adjust the angle of maximum torque of 60 degrees and the reach adjustments until both tests are in limits without any further adjustments.
5. Check the other reach taps according to table XII. Check the taps in both test 1 and test 2 of Figure 11. Test 2 will check the compensating winding of each unit.

TABLE XII

REACH TAP ØN	LINKS		PHASE ANGLE METER	VOLTAGE		PICKUP CURRENT
	A	B		V ₁	V ₂	
1 	1	0	60° LAG	104V	35V	17.0-18.2
2 	0	2	60° LAG	104V	35V	8.5-9.1
4 	0	4	60° LAG	104V	70V	8.5-9.1

- E. Set the conditions as in Mho unit, section A and check and reset the control spring to the limits specified in this section. A slight adjustment will not disturb the previous tests.

RENEWAL PARTS

It is recommended that sufficient quantities of renewal parts be carried in stock to enable the prompt replacement of any that are worn, broken, or damaged.

When ordering renewal parts, address the nearest Sales Office of the General Electric Company, specify quantity required, name of part wanted, and give complete nameplate data. If possible, give the General Electric requisition number on which the relay was furnished.

APPENDIX IDEFINITION OF SYMBOLS

In the following appendices, and throughout other portions of this instruction book, the symbols used for voltages, currents, impedances, etc., are consistent. Note that all of the parameters listed below are secondary quantities based on the CT and PT ratios on the protected line terminal. Other symbols not defined here are to be defined as and where they are used.

Voltage

E_a = Phase A-to-neutral voltage.

$$E_{ab} = (E_a - E_b)$$

E_b = Phase B-to-neutral voltage.

$$E_{bc} = (E_b - E_c)$$

E_c = Phase C-to-neutral voltage.

$$E_{ca} = (E_c - E_a)$$

E_{am} = Phase A-to-median (midpoint of E_{bc}) voltage

E_{bm} = Phase B-to-median (midpoint of E_{ca}) voltage

E_{cm} = Phase C-to-median (midpoint of E_{ab}) voltage

E_0 = Zero sequence phase-to-neutral voltage.

E_1 = Positive sequence phase-to-neutral voltage.

E_2 = Negative sequence phase-to-neutral voltage.

Note that when one of these symbols is primed, such as E_a' , it then represents the voltage at the location of the relay under consideration.

Current

I_a = Total phase A current in the fault.

I_b = Total phase B current in the fault.

I_c = Total phase C current in the fault.

I_0 = Total zero sequence current in the fault.

I_1 = Total positive sequence current in the fault.

I_2 = Total negative sequence current in the fault.

Note that when one of the above symbols is primed, such as I_a' , or I_2' , it then represents only that portion of the current that flows in the relays under consideration.

I_0'' = Zero sequence current flowing in a line that is parallel to the protected line. Taken as positive when the current flow in the parallel line is in the same direction as the current flowing in the protected line. While this current flows in the parallel line, the secondary value is based on the CT ratio at the protected line terminal under consideration.

Distribution Ratios

C = Positive sequence current distribution ratio, assumed equal to the negative sequence current distribution ratio.

C_0 = Zero sequence current distribution ratio.

$$C = \frac{I_1'}{I_1} = \frac{I_2'}{I_2}$$

$$C_0 = \frac{I_0'}{I_0}$$

Impedance, Reactance

Z_0 = System zero sequence phase-to-neutral impedance as viewed from the fault.

Z_1 = System positive sequence phase-to-neutral impedance as viewed from the fault.

Z_2 = System negative sequence phase-to-neutral impedance as viewed from the fault. Assume equal to Z_1 .

Z_0' = Zero sequence phase-to-neutral impedance of the protected line from the relay to the remote terminal.

Z_1' = Positive sequence phase-to-neutral impedance of the protected line from the relay to the remote terminal.

Z_2' = Negative sequence phase-to-neutral impedance of the protected line from the relay to the remote terminal, assume equal to Z_1' .

Z_{om} = Total zero sequence mutual impedance between the protected line and a parallel circuit over the entire length of the protected line.

X_1' = Positive sequence phase-to-neutral reactance of the protected line from the relay to the remote terminal.

X_0' = Zero sequence phase-to-neutral reactance of the protected line from the relay to the remote terminal.

X_{om} = Total zero sequence mutual reactance between the protected line and a parallel line over the entire length of the protected line.

Z_a = Phase A impedance for conditions described.

All of the above are secondary ohms, where:

$$\text{Secondary Ohms} = \text{Primary Ohms} \times \frac{\text{CT Ratio}}{\text{PT Ratio}}$$

and Z_{om} and X_{om} are calculated using the CT ratio for the protected line.

Miscellaneous

T = Relay voltage restraint tap setting in percent.

B, θ , \emptyset = Angles in degrees as defined where used.

K_Q = Constant depending on the ratio of Z_0/Z_1 .

T_B = Relay basic minimum ohmic tap at the set angle of maximum reach.

K' = Zero sequence current compensation tap setting for the protected line; in percent, unless otherwise noted.

K'' = Zero sequence current compensation tap setting for the parallel line; in percent, unless otherwise noted.

S = Ratio of distances as defined where used.

M = Reach of Mho function from the origin (relay location) in the direction of the protected line section as forward reach.

M^* = Reach of Mho function from the origin (relay location) away from the protected line section as reverse reach or reach in the blocking direction.

APPENDIX IIMINIMUM PERMISSIBLE REACH SETTING
FOR THE CEYG53A

The CEYG53A relay will measure positive sequence impedance and, therefore, distance on the transmission line accurately on three phase faults. However, on single phase to ground faults, when zero sequence current compensation is NOT used, its reach is foreshortened. If zero sequence current compensation is used, the only remaining variation in unit reach will be due to zero sequence mutual impedance with a parallel line. These factors will be evident from the following equations IIc and IIk. The mho units of the CEYG53A relay must not be compensated for the zero sequence mutual impedance due to a parallel line. This is because reversed mutual in the parallel line could cause the mho unit to operate incorrectly on the protected line. (See Appendix I for the definition of symbols used in the following equations).

(A) NO ZERO SEQUENCE CURRENT COMPENSATION

When zero sequence current compensation is NOT used, the effective impedance as seen by the relay on the faulted phase for a single phase to ground fault at the far end of the line is:

$$Z_A = Z_1' + \frac{(Z_0' - Z_1') C_0}{2C + C_0} + \frac{Z_{0m} I_0''}{I_a} \quad \text{II-a}$$

where: Z_A = apparent impedance seen by the ground mho unit on the faulted phase.

The reach setting of the mho unit must be large enough to detect a single-phase-to-ground fault at the remote end of the protected line with margin. The required setting of the restraint tap to provide a reach of Z ohms at the line angle can be expressed as follows:

$$T = \frac{100 T_B \cos (\theta - \phi)}{Z} \quad \text{II-b}$$

where:

Z = Desired reach at line angle
 θ = Line angle in degrees (i.e. I_a' lags E_a')
 ϕ = Angle of maximum torque of mho unit

Referring to equation II-a, for a three-phase fault or for a single-phase-to-ground fault where $Z_0' = Z_1'$ and there is no mutual with a parallel line, the apparent impedance Z_A seen by the mho unit will be Z_1' . However, for the more typical conditions where Z_0' and Z_1' are not equal, and where there may also be zero sequence mutual with a parallel line, the apparent impedance seen by the mho units for a single-phase-to-ground fault will be as shown in equation II-a, and it is apparent that the reach will in effect be pulled back. Written in more general form, and providing for a margin of 1.25, equation II-b becomes:

$$T_{\max} = \frac{100 T_B \cos (\theta - \phi)}{1.25 \left[Z_1' + \frac{(Z_0' - Z_1') C_0}{2C + C_0} + \frac{Z_{0m} I_0''}{I_a} \right]} \quad \text{II-c}$$

where:

T_{\max} = Maximum permissible restraint tap setting.

If the solution to equation II-c yields a tap setting (T_{\max}) greater than 100 percent, even the shortest reach setting for the basic tap (T_B) if used will insure that the mho functions reach at least to the remote bus with margin of 1.25. If it is desired to have the unit reach further beyond the remote bus, a lower tap setting of course will be required.

If there is no zero sequence mutual impedance the last term of equation II-a is zero, and the expression for the apparent impedance becomes:

$$Z_A = Z_1' + \frac{(Z_0' - Z_1') C_0}{2C + C_0} \quad \text{II-d}$$

If both the numerator and denominator of the second term of this expression are divided by C_0 the equation becomes:

$$Z_A = Z_1' + \frac{(Z_0' - Z_1')}{\left(\frac{2C}{C_0} + 1\right)} \quad \text{II-e}$$

The influence of the distribution constants C and C_0 on the apparent impedance is now more obvious. For example, on an application where $Z_0' = 3Z_1'$ the situation with single-end feed (i.e. $C = C_0 = 1$) results in:

$$Z_A = Z_1' + \frac{(3Z_1' - Z_1')}{\frac{2}{1} + 1} = Z_1' + \frac{2Z_1'}{3} = 1.67Z_1'$$

Thus to insure that the mho unit will reach to the far end of the line with the remote breaker open it must be set for $1.67Z_1'$ plus desired margin. Of course, with both breakers closed, and the zero sequence distribution factor (C_0) much greater than the positive sequence factor (C), the required reach setting will be much higher. For example, if $C = 0.3$ and $C_0 = 0.8$ for a fault at the remote bus, and $Z_0' = 3Z_1'$, the apparent impedance, Z_A , is $2.1Z_1'$.

The user must determine the apparent impedance seen by the relay for a fault at the remote bus with the most unfavorable combination of distribution factors that he considers possible for the application, and then determine the maximum permissible tap setting for the mho functions from equation II-c which will insure operation for this remote fault. It is apparent that in some instances, especially on long lines, the required settings of the mho functions may be too large to be practical. Use of the zero sequence compensation feature described below should be considered.

If there is zero sequence mutual impedance between the protected line and another circuit, the last term in the denominator of II-c must be included in the calculations. If this mutual impedance is between the protected line and several other circuits, this last term becomes:

$$\frac{1}{I_a'} \left(\sum Z_{om} I_0'' \right) \quad \text{II-f}$$

Note in this summation that the direction the zero sequence current flows (I_0'') in each of the parallel circuits must be considered.

(B) WITH ZERO SEQUENCE CURRENT COMPENSATION

When zero sequence current compensation is used, the apparent impedance seen by the relay on the faulted phase for a single-phase-to-ground fault at the far end of the line becomes:

$$Z_A = Z_1' + \frac{Z_{om} I_0''}{I_a' + 3K' I_0'} \quad \text{II-g}$$

where K' in per unit is defined as follows:

$$K' = \frac{X_0' - X_1'}{3X_1'} \quad \text{II-h}$$

As is apparent from equation II-g, the zero sequence current compensation has the effect of reducing the apparent impedance, Z_A , seen by the relay on the faulted phase so that a shorter reach setting can be used with assurance that the mho unit will see a fault at the remote end of the protected line. In fact, if complete compensation is achieved, and there is no zero sequence mutual, the apparent impedance, Z_A , will be equal to Z_1' . The expression for the maximum permissible restraint tap setting now becomes:

$$T_{\max} = \frac{100 T_B \cos (\emptyset - \theta)}{1.25 \left[Z_1' + \frac{Z_{0m} I_0''}{I_a' + 3K' I_0'} \right]} \quad \text{II-k}$$

APPENDIX III
MAXIMUM PERMISSIBLE REACH SETTING
FOR THE CEYG53A

Under some system conditions it is possible, during single-phase or double-phase-to-ground faults in the non-trip direction, for a unit associated with an unfaulted phase to operate. Since this can result in a false trip, it is necessary to limit the reach setting of the ground mho functions to prevent them from picking up on such reverse faults. In the following sections equations are given for determining the minimum permissible restraint tap setting. (i.e. maximum reach) for both types of ground faults. Since zero sequence current compensation is optional in the CEYG53A relays, the following discussion is in two parts; (A) without compensation; (B) with compensation.

(A) WITHOUT COMPENSATION

(1) Single-Phase-To-Ground Faults

Although false tripping on external faults is the chief concern, fault location (F1 or F2 in Figure 17 does not affect relay operation on the unfaulted phase(s) and the following equations are derived using distribution constants for external faults on the bus behind the relay location.

In order to avoid false tripping on external single-phase-to-ground faults it is necessary to limit the reach settings of the ground mho units by keeping the restraint tap setting T higher than the value given in equation IIIA-a. Evaluate this equation for single-phase-to-ground faults on the bus immediately behind the relay location or as faults F2 in Figure 17.

$$T = \frac{T_B K_Q (C_0 - C)}{Z_1} \quad \text{IIIA-a}$$

where: T = Minimum safe tap setting in percent.

K_Q = System constant depending upon the ratio of system impedance Z_0/Z_1 as seen from the fault. Use curves Figure 15 for 60 degree maximum reach and curves Figure (B) for 75 degree maximum reach and make a direct substitution of the value of K_Q obtained into equation IIIA-a.

C , C_0 and Z_1 are defined in Appendix I.

(2) Double-Phase-To-Ground Faults

In order to avoid false tripping on external double phase-to-ground faults it is necessary to limit the reach settings of the ground mho units by keeping the restraint tap setting T higher than the value given by equation IIIA-b. Evaluate this equation for the same conditions as equation IIIA-a because the system sequence components and distribution constants are independent of the type of fault.

$$T = \frac{100T_B (C_0 - C) \cos (\theta - \emptyset)}{3Z_0} \quad \text{IIIA-b}$$

where: Z_0 = System zero sequence phase-to-neutral impedance as seen from the fault.

θ = Impedance angle of Z_0 .

\emptyset = Maximum torque angle setting of the relay.

(All other terms are defined previously).

After evaluation of equations IIIA-a and IIIA-b, the higher of the two tap values should be selected. The tap setting used on the relay should be no lower than this value nor should it be any higher than the tap obtained from equation II-c in Appendix II.

For both equations IIIA-a and IIIA-b, if a negative value for T is obtained it signifies that the equation offers no limitation to the setting. Thus, any tap setting of 10 percent or more will be safe. Thus, when evaluating equations IIIA-a and IIIA-b, the first step should be the evaluation of the term $(C_0 - C)$. If this term is negative for all the system operating conditions for a ground fault at F2, this is all that need be determined.

(B) WITH COMPENSATION

When zero sequence current compensation is used with the CEY653A relay, the same checks as noted in the previous section III-A must be made except that the equations must be modified by the compensation factor as noted below:

(1) Single-phase-to-ground Faults

$$T = \frac{T_B K_Q [(3K' + 1) C_0 - C]}{Z_1}$$

where: K' = Per unit zero sequence current compensation (see equation II-h)
Note that $(3K' + 1) = X_0'/X_1'$

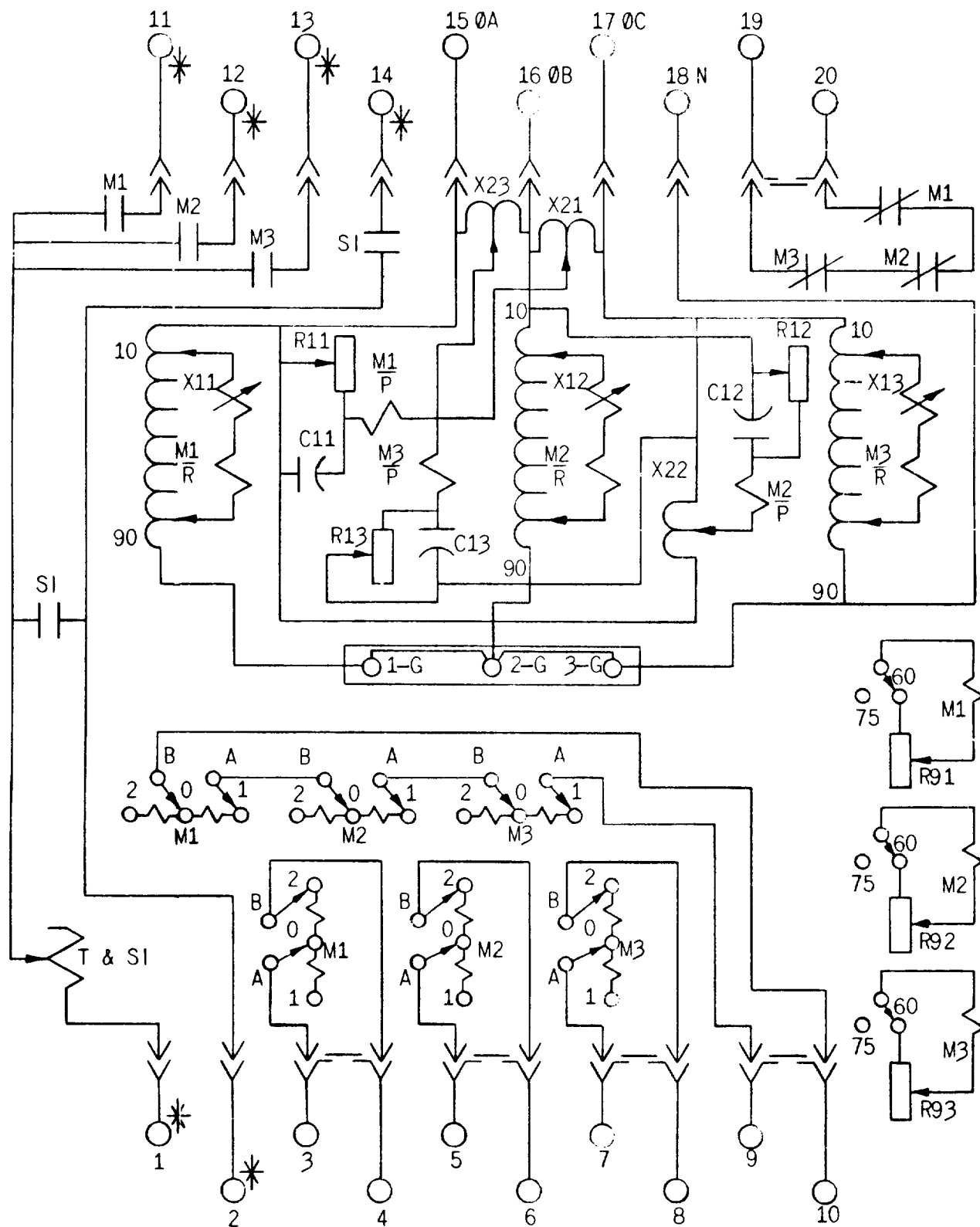
(2) Double-phase-to-ground Faults

$$T = \frac{100T_B [(3K' + 1) C_0 - C] \cos (\theta - \phi)}{3Z_0}$$

After evaluation of equations IIIB-a and IIIB-b, the higher of the two tap values should be selected, and then some margin such as 10 percent (not 10 percentage points) should be added to this setting. The tap setting used on the relay should be no lower than this value nor should it be any higher than the tap obtained from equation IIB-d in appendix II.

For both equations IIIB-a and IIIB-b, if a negative value for T is obtained, it signifies that the equation offers no limitation to the setting. Thus, any tap setting of 10 percent or more will be safe. Thus, when evaluating equations IIIB-a and IIIB-b, the first step should be the evaluation of the term $[(3K' + 1) C_0 - C]$. If this term is negative for all the system operating conditions for a ground fault at F2, this is all that need be determined.

Since the last edition, Figure 12 has been changed.



* = SHORT FINGER M1-TOP UNIT; M2-MIDDLE UNIT; M3-BOTTOM UNIT

FIG. 3 (0226A6986-1) Internal Connections Diagram For CEYG53A(-)D

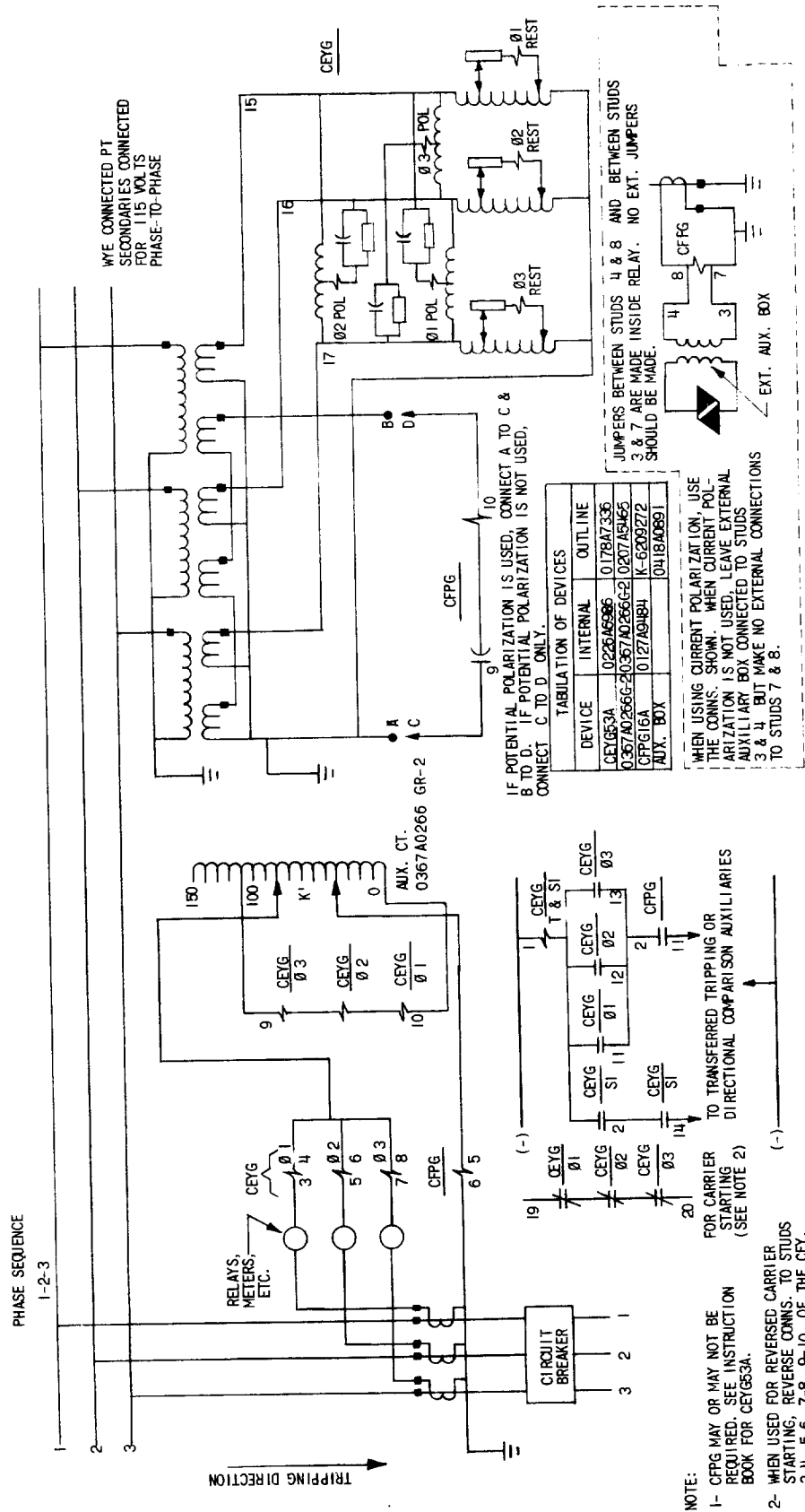


FIG. 4 (0165B2550-0) Typical External Connections For CEYG53A(-)D Relay

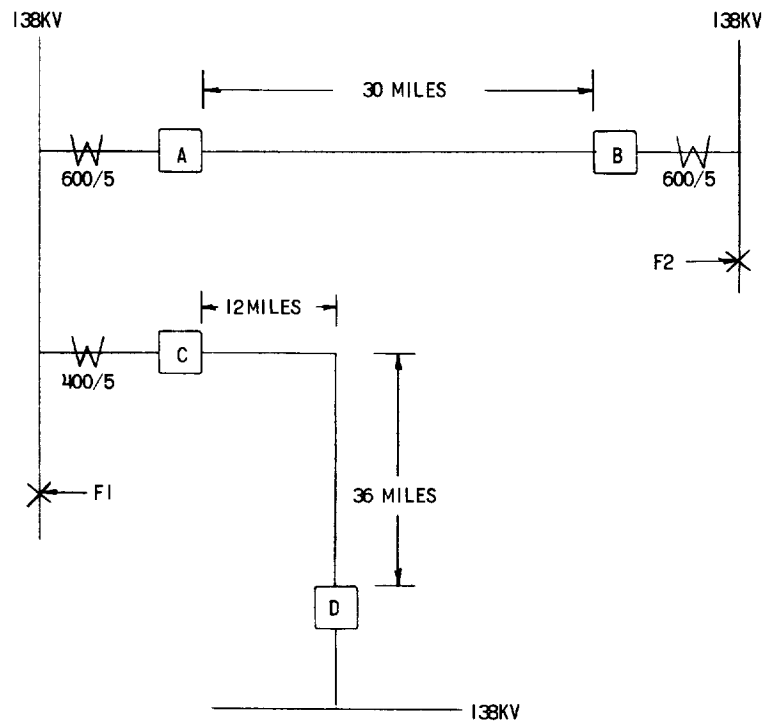


FIG. 5 (0208A5544-0) Typical Transmission Line System

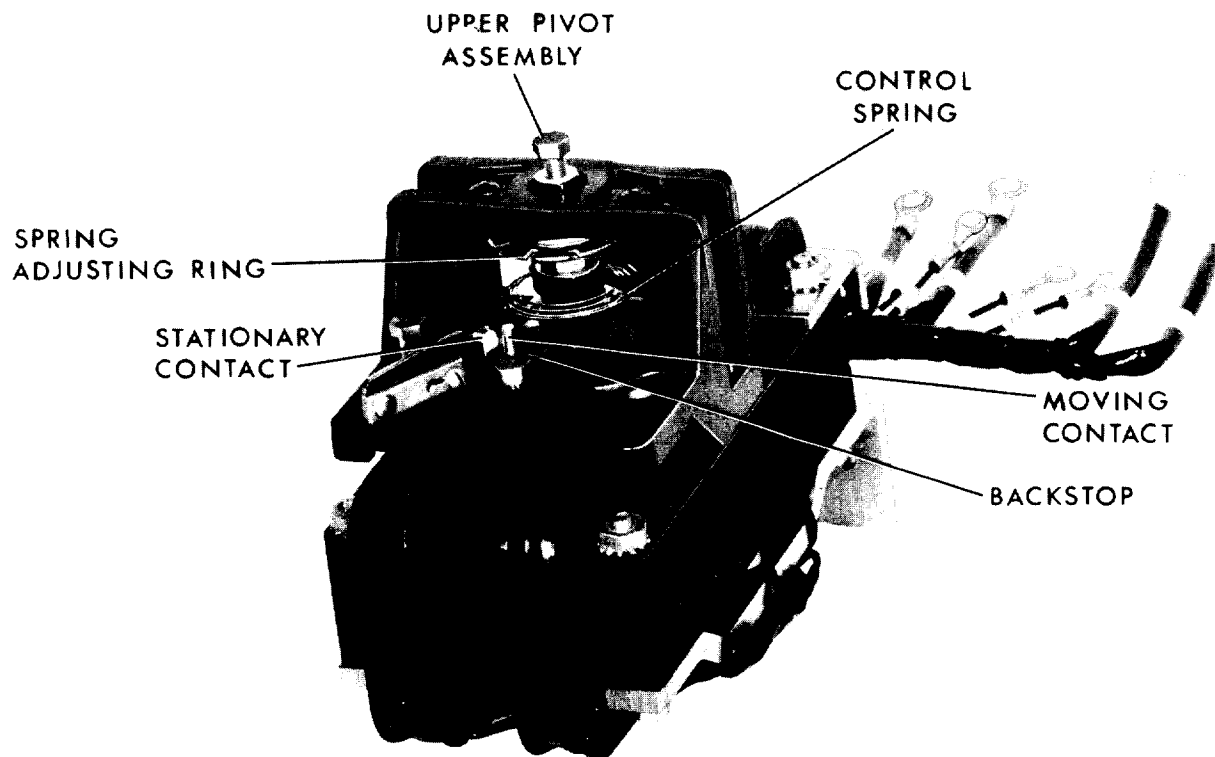


FIG. 6 (8034958) Four Pole Induction Cylinder Unit

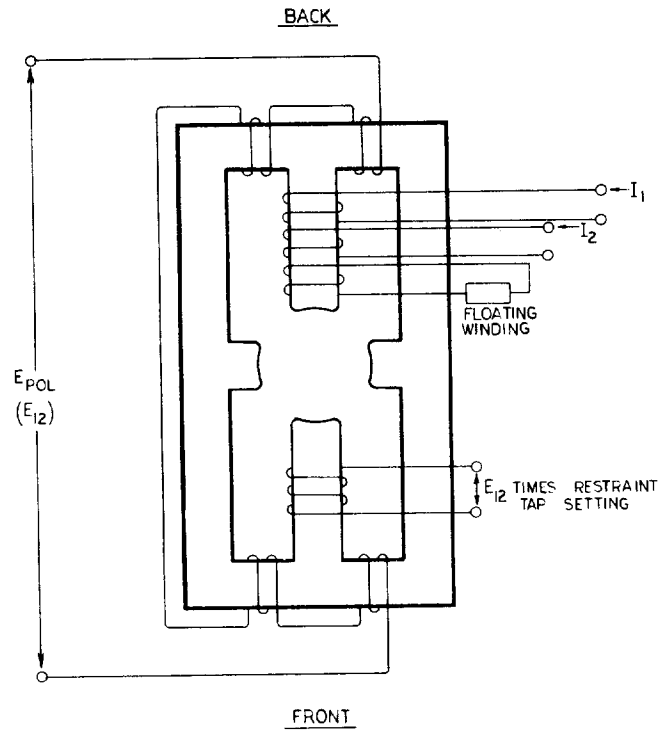


FIG. 7 (0208A5577-0) Schematic Connections Of Typical MHO Unit

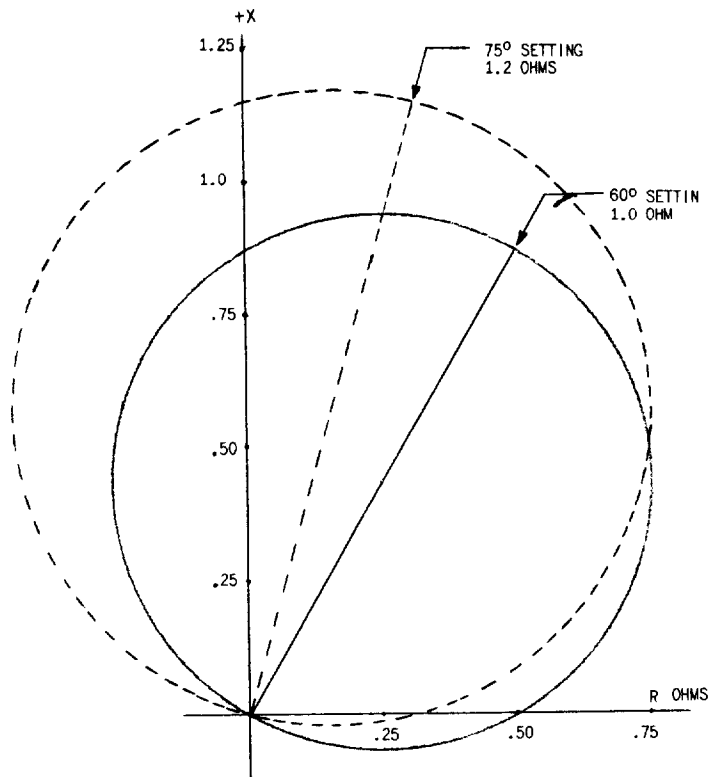


FIG. 8 (0178A8174-0) X-R Impedance Diagram

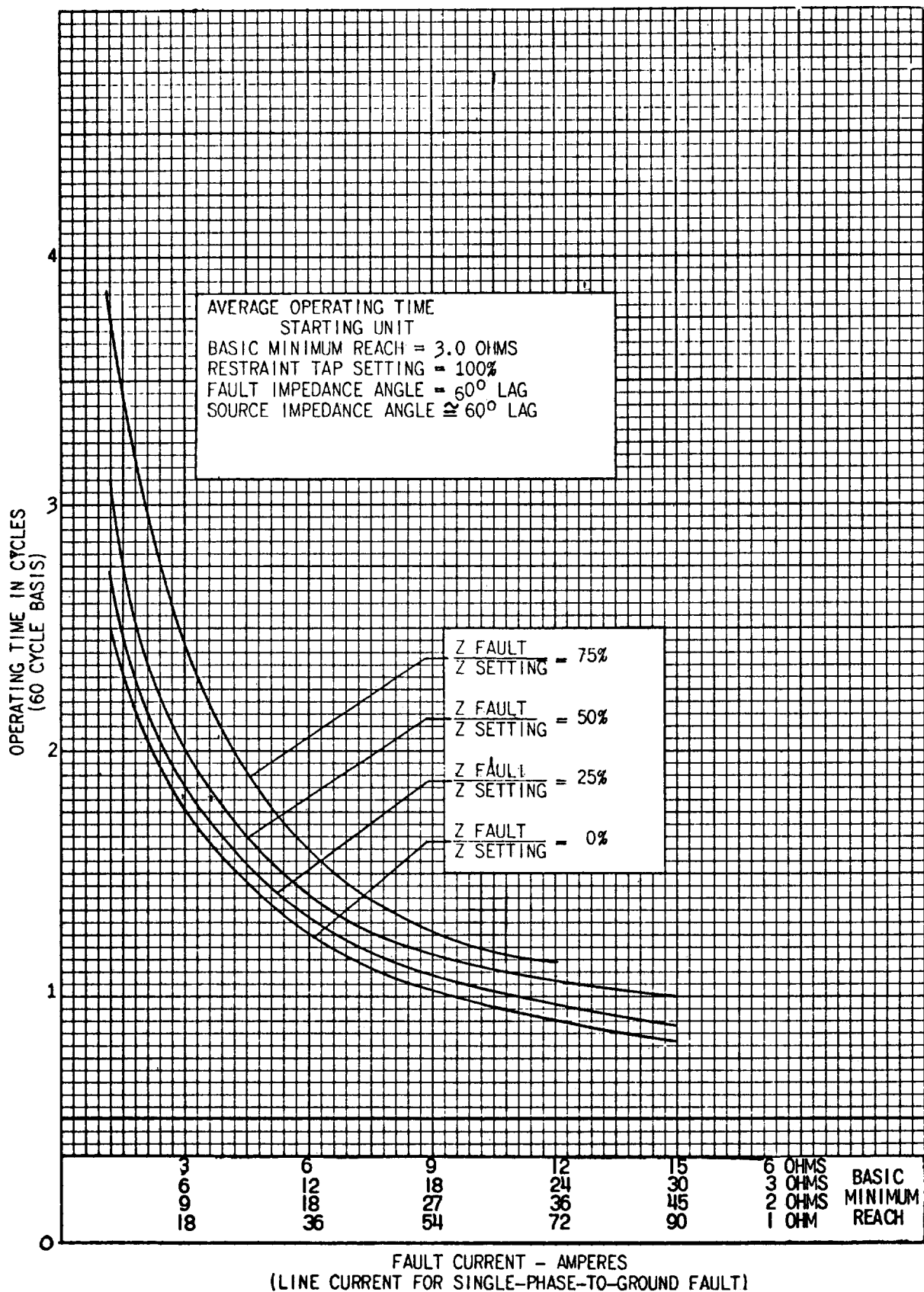


FIG. 9 (0227A2682-0) Operating Time Curves For CEYG53A(-)D Relay

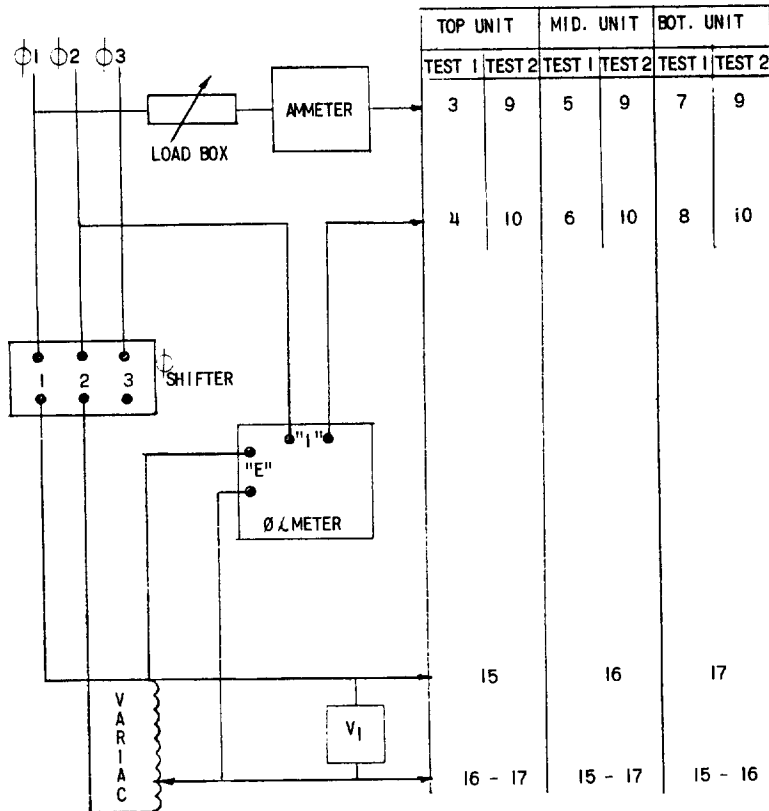


FIG. 10 (0227A7193-0) Test Connections Diagram For Control Spring Adjustment

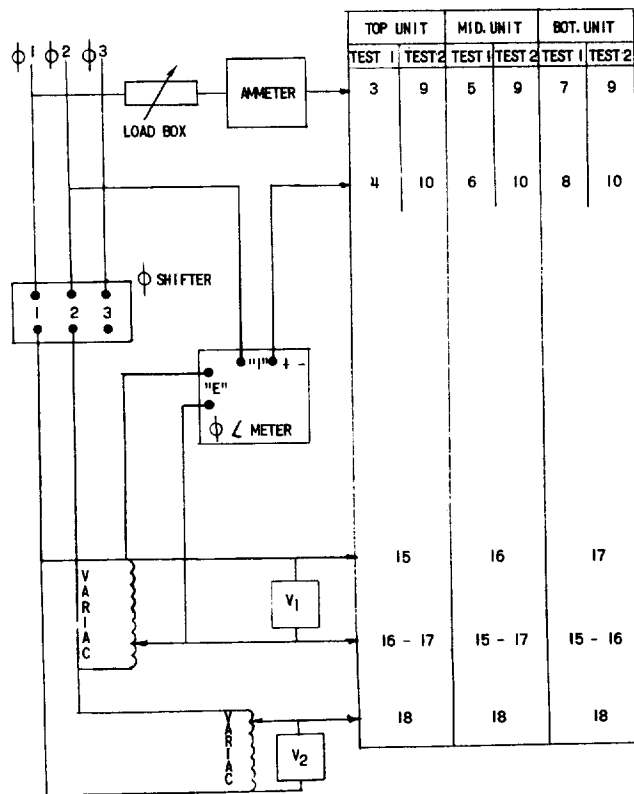


FIG. 11 (0227A7192-0) Test Connections Diagram For Reach And Angle Of Maximum Torque Adjustments

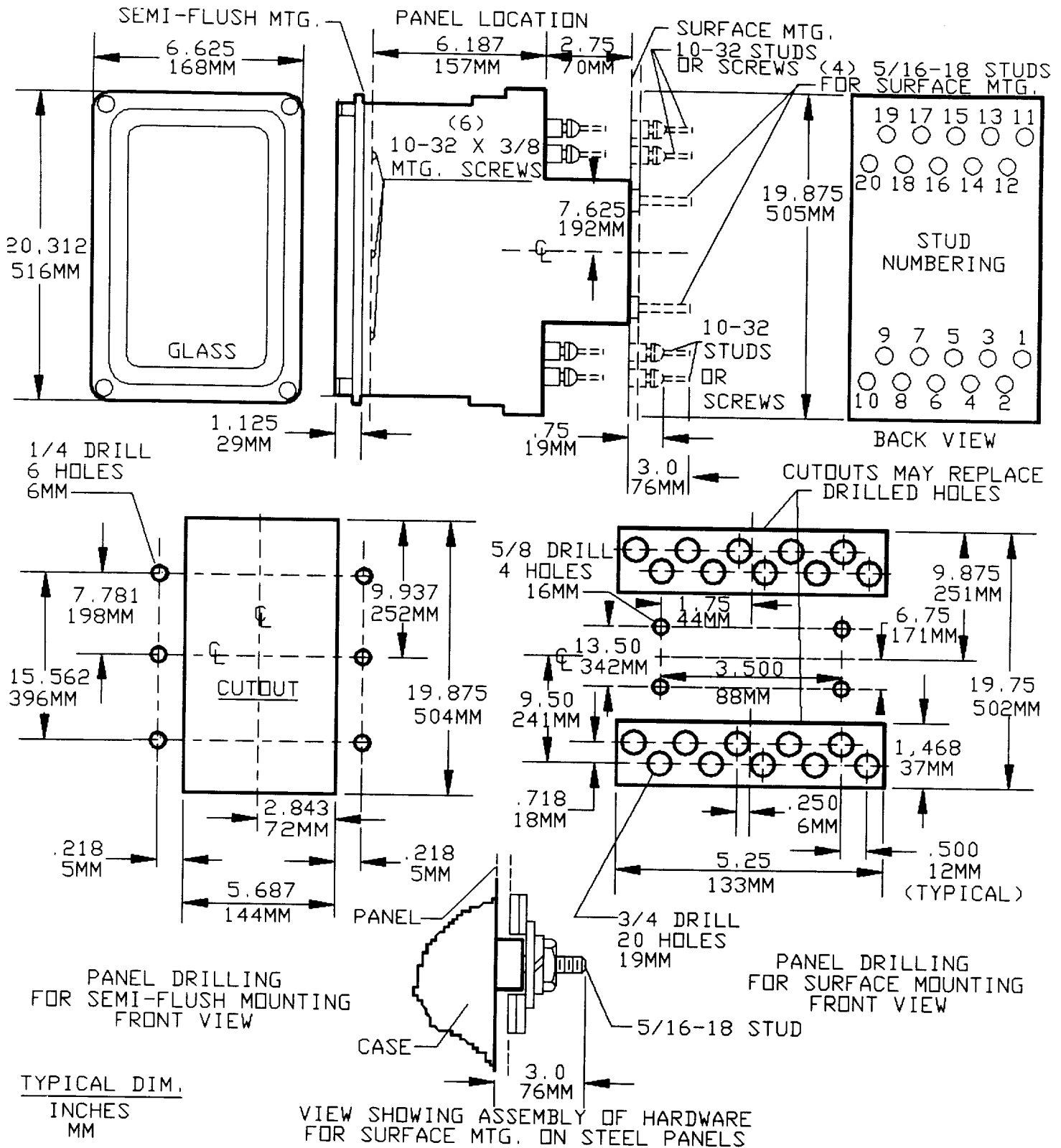
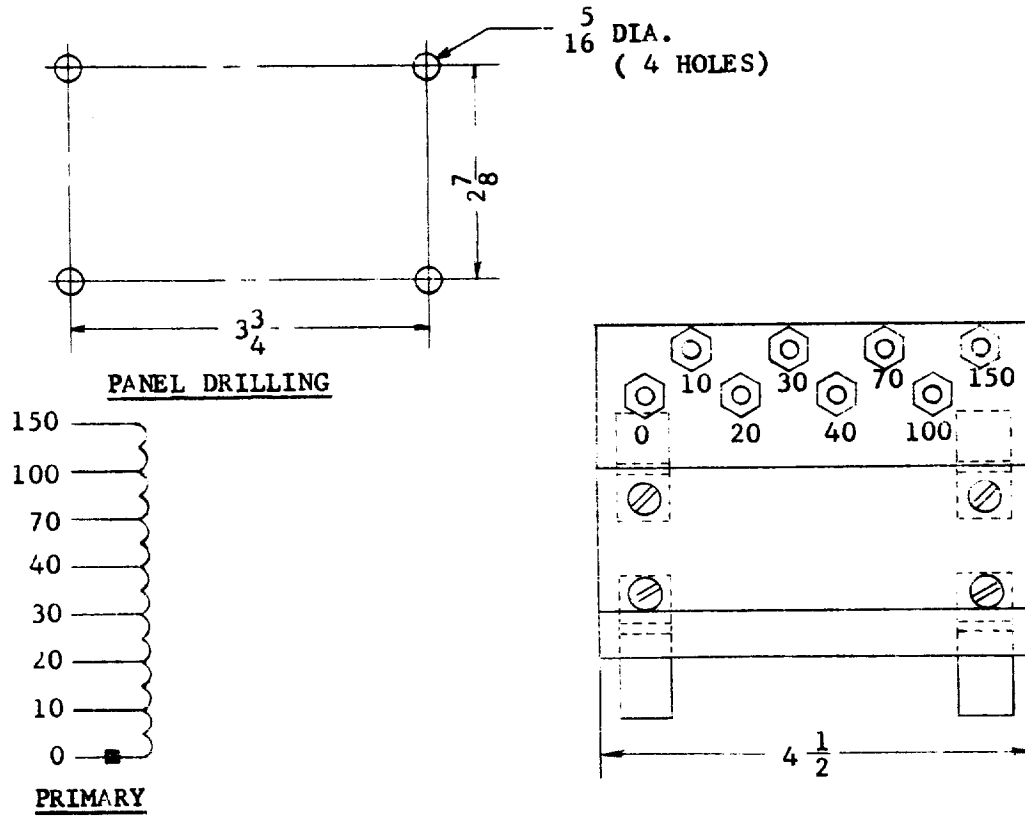


FIG. 12 (0178A7336 [5]) Outline and Panel Drilling Diagram



INTERNAL CONNECTIONS

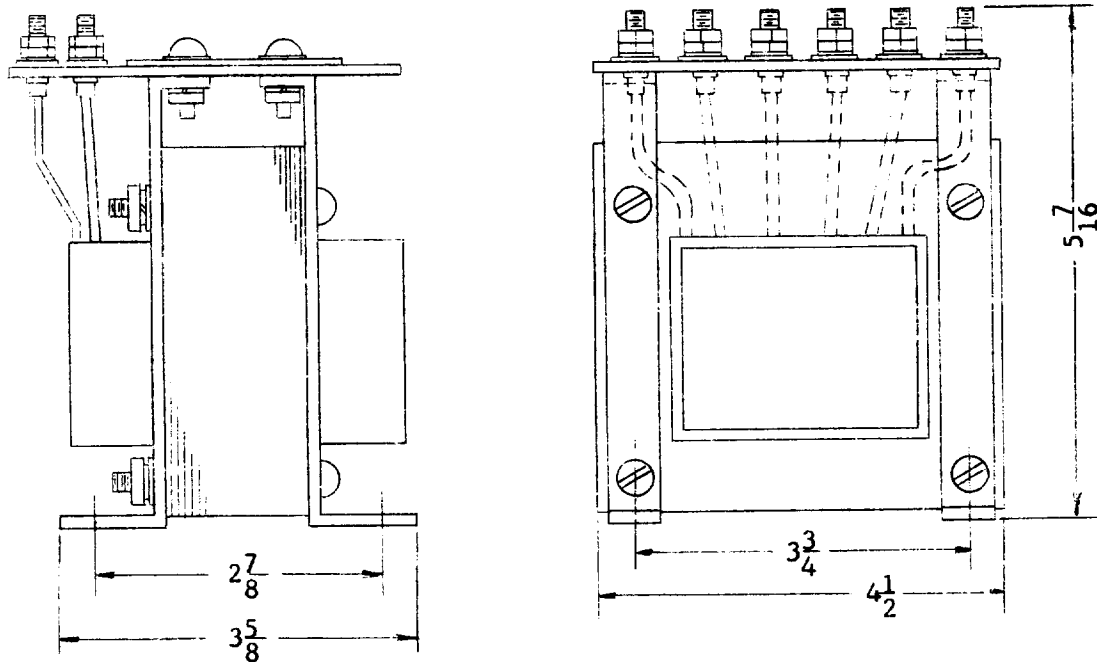


FIG. 13 (0207A5465-0) Internal Connections For The Auxiliary Compensating Transformer

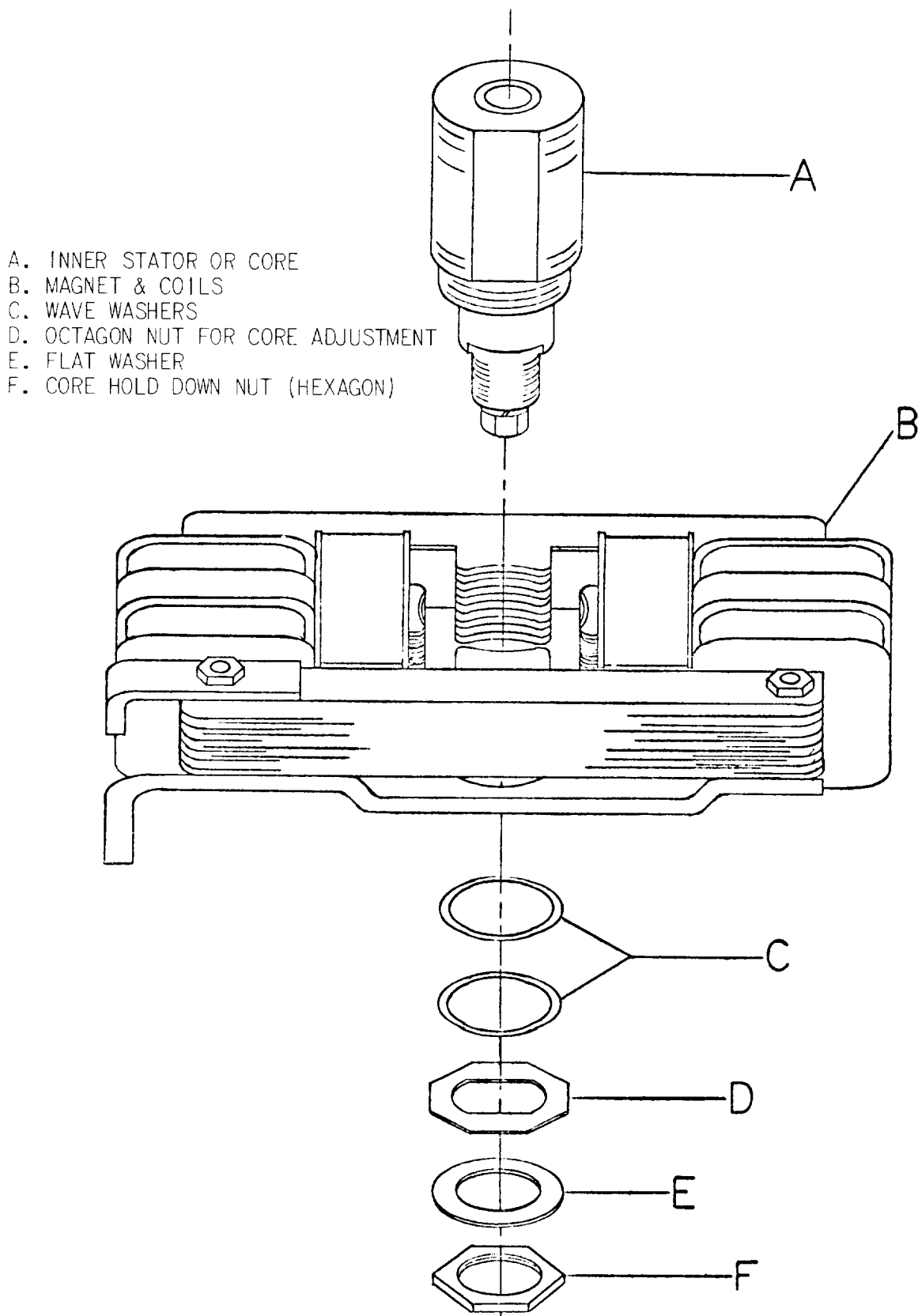


FIG. 14 (0208A3583-0) Assembly Of Core And Associated Parts

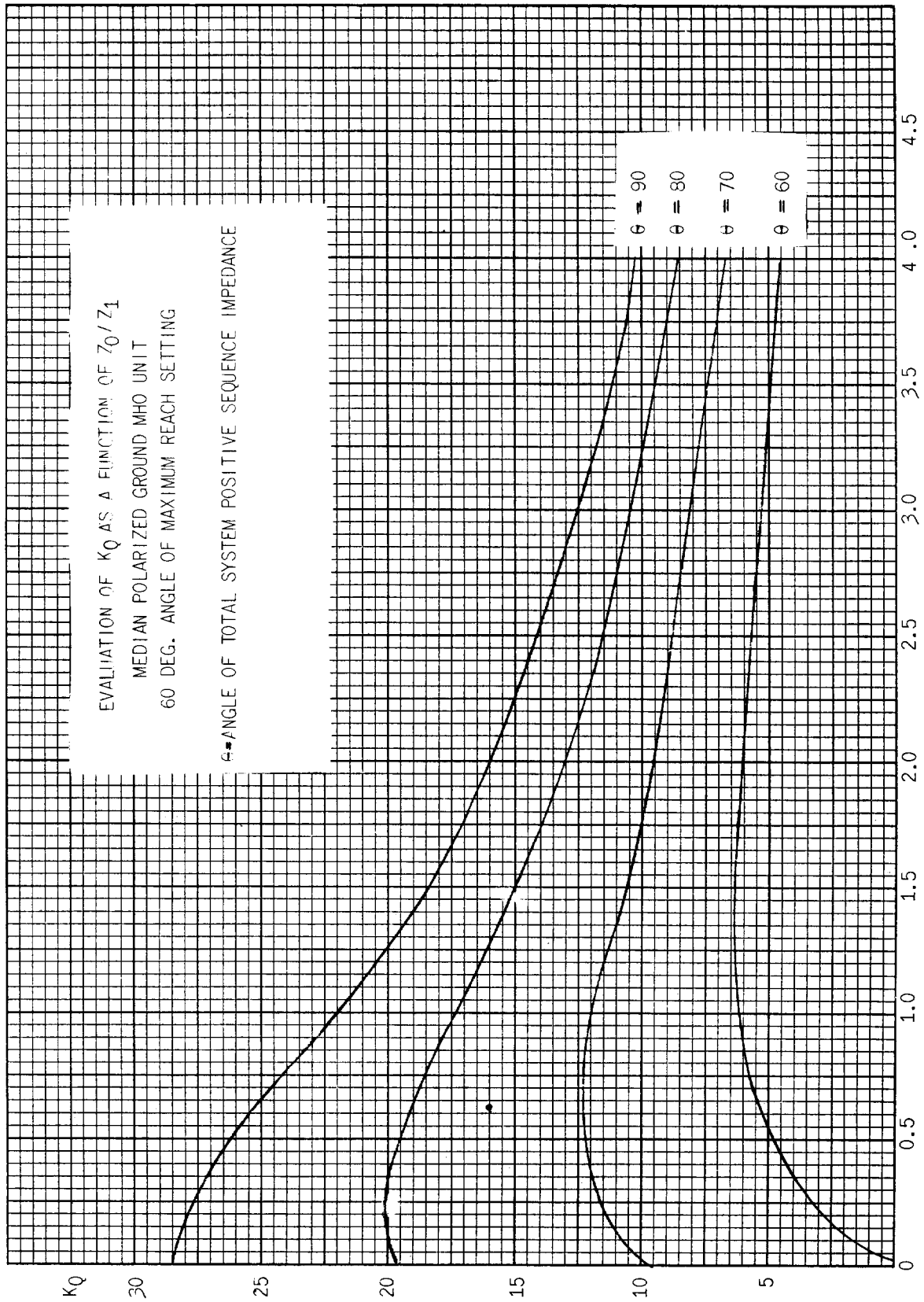


FIG. 15 (0226A6904-2) Evaluation Of K_Q As A Function Of Z_0/Z_1
 For MHO Unit With 60° Maximum Torque Angle

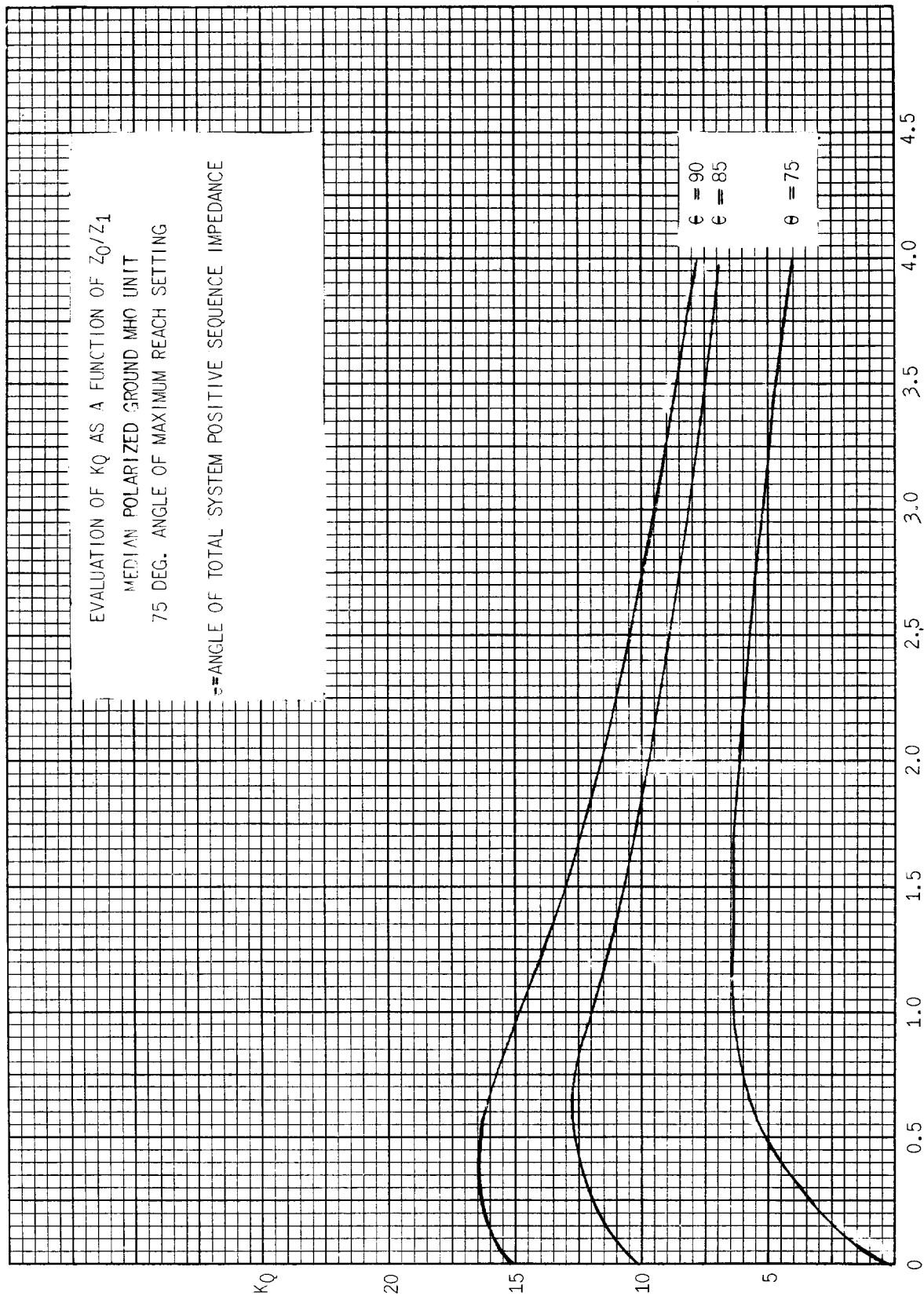


FIG. 16 (0226A6905-2) Evaluation Of K_Q As A Function Of Z_0/Z_1
 For MHO Unit With 75° Maximum Torque Angle

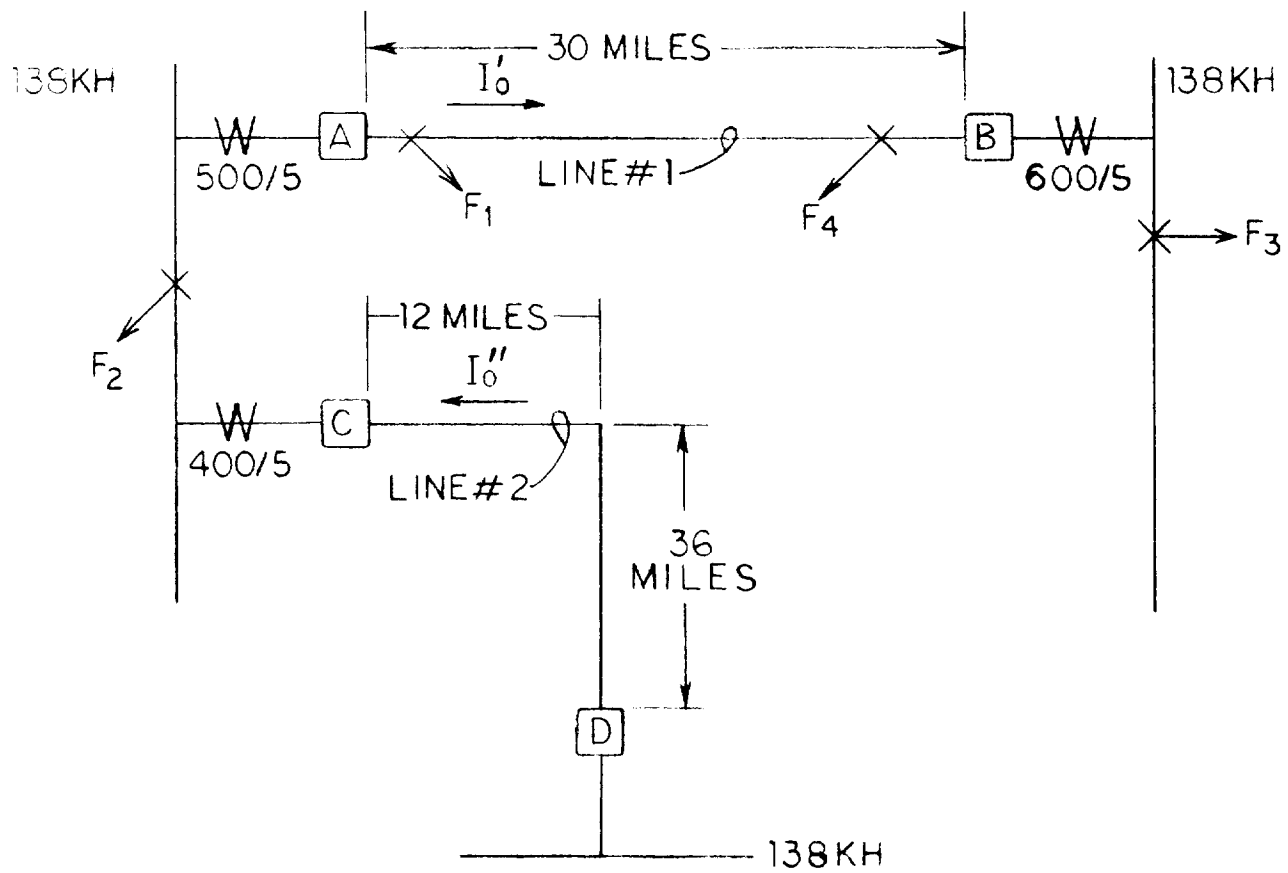


FIG. 17 (0165A7622 [2]) Typical Transmission System



GE Power Management

215 Anderson Avenue
Markham, Ontario
Canada L6E 1B3
Tel: (905) 294-6222
Fax: (905) 201-2098
www.ge.com/indsys/pm