



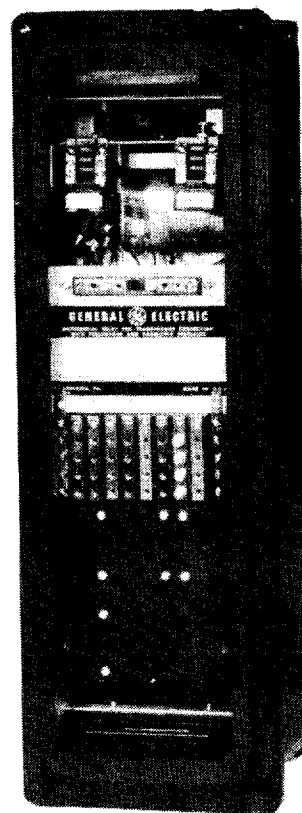
INSTRUCTIONS

GEI-98349E

INSERT BOOK GEH-2057

TRANSFORMER DIFFERENTIAL RELAY WITH PERCENTAGE AND HARMONIC RESTRAINT

Type BDD17B



GENERAL  ELECTRIC

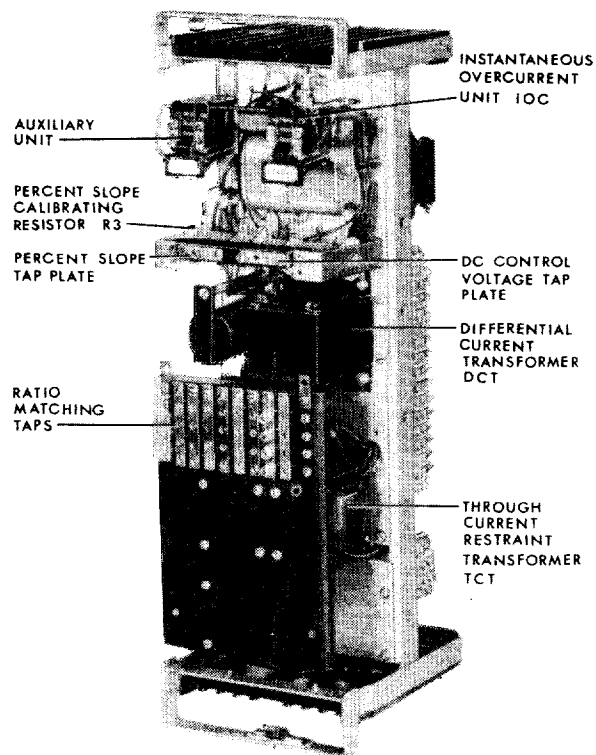


Fig. 1A (8035512) Type BDD17B Relay, Cradle Removed From Case, Front View.

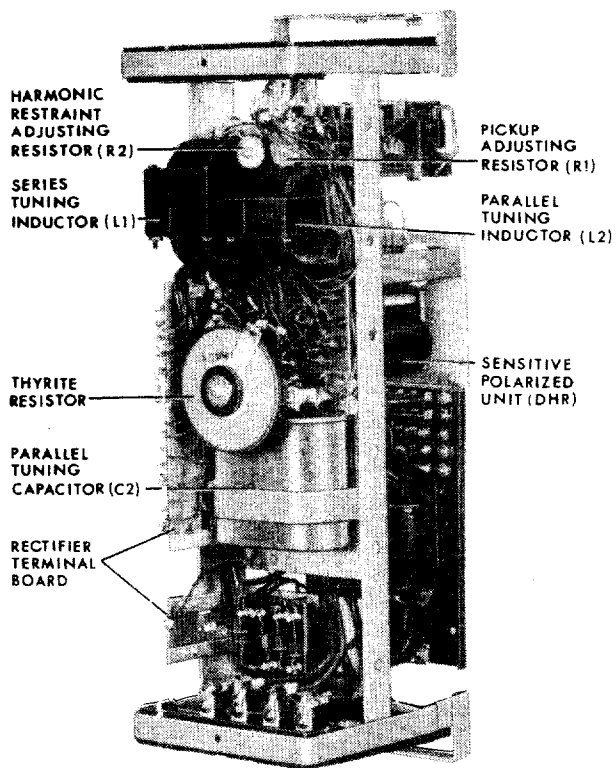


Fig. 1B (8035510) Type BDD17B Relay, Cradle Removed From Case, Rear View.

Cover (8035511)

TRANSFORMER DIFFERENTIAL RELAY WITH PERCENTAGE & HARMONIC RESTRAINT TYPE BDD

INTRODUCTION

These instructions are a supplement to instruction book GEH-2057, which is included in this book. The combination of the two form instructions for the type BDD17B relay.

DESCRIPTION

The Type BDD17B relay is similar to the BDD16B except the former has four through current restraint windings and is mounted in the L2 (large, double ended) case.

Figure 1 shows the location of the components in the BDD17B relay.

Figure 2 shows the internal connection diagram for the BDD17B relay.

Figure 3 shows the typical wiring diagram for the BDD17B relay.

Figure 4 shows the test circuit for the BDD17B relay.

Figure 5 shows the outline and panel drilling for the BDD17B relay.

Fig. 16 of GEH-2057 can be applied to the Type BDD17B by using any two restraint circuits for the test. The other two restraint circuits should be de-energized during this check.

Since the last edition, changes have been made in Figures 2 and 5.

These instructions do not purport to cover all details or variations in equipment nor to provide for every possible contingency to be met in connection with installation, operation or maintenance. Should further information be desired or should particular problems arise which are not covered sufficiently for the purchaser's purposes, the matter should be referred to the General Electric Company.

To the extent required the products described herein meet applicable ANSI, IEEE and NEMA standards; but no such assurance is given with respect to local codes and ordinances because they vary greatly.

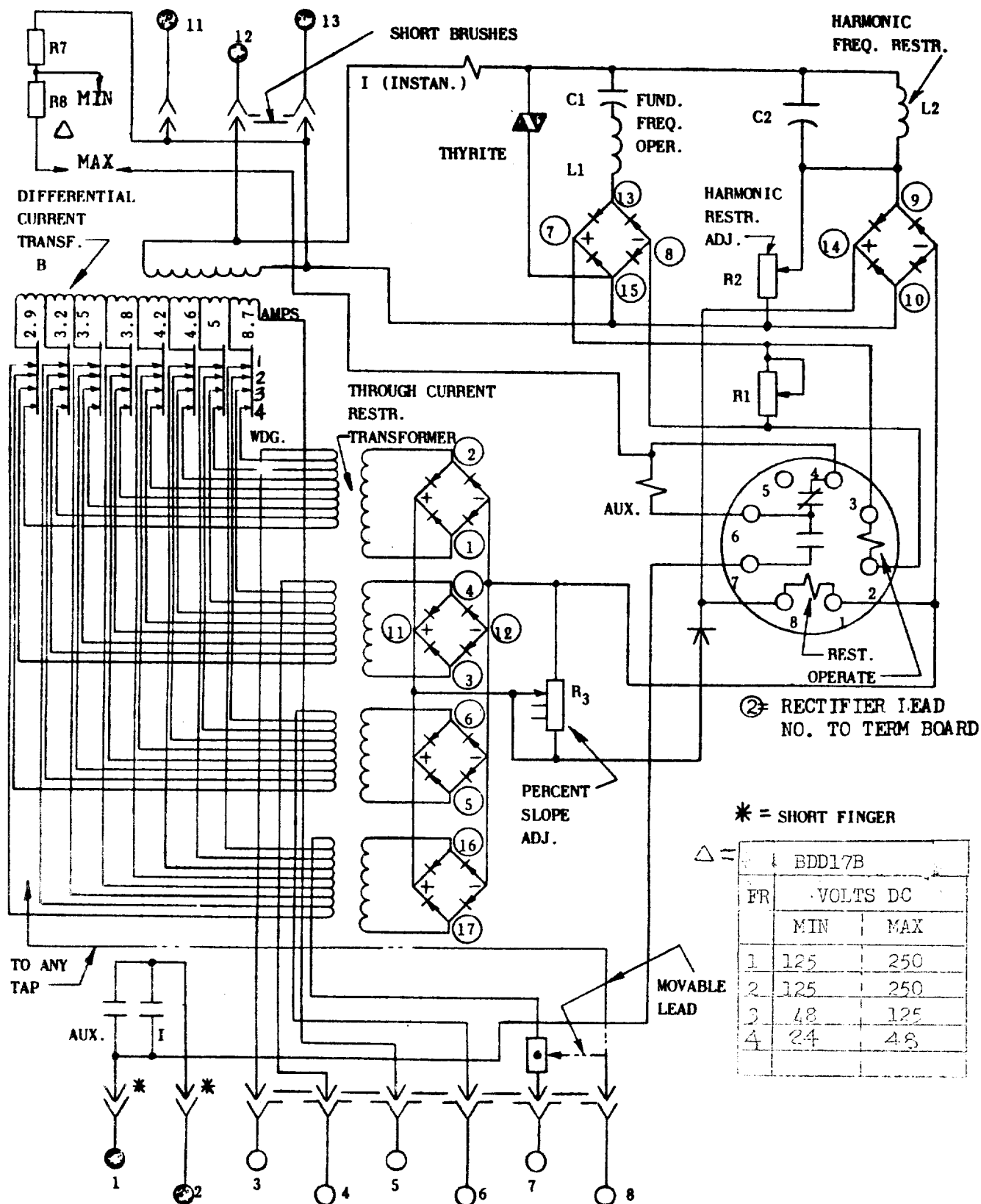


Fig. 2 (0178A9048 [2]) Internal Connections for Relay Type BDD17B.

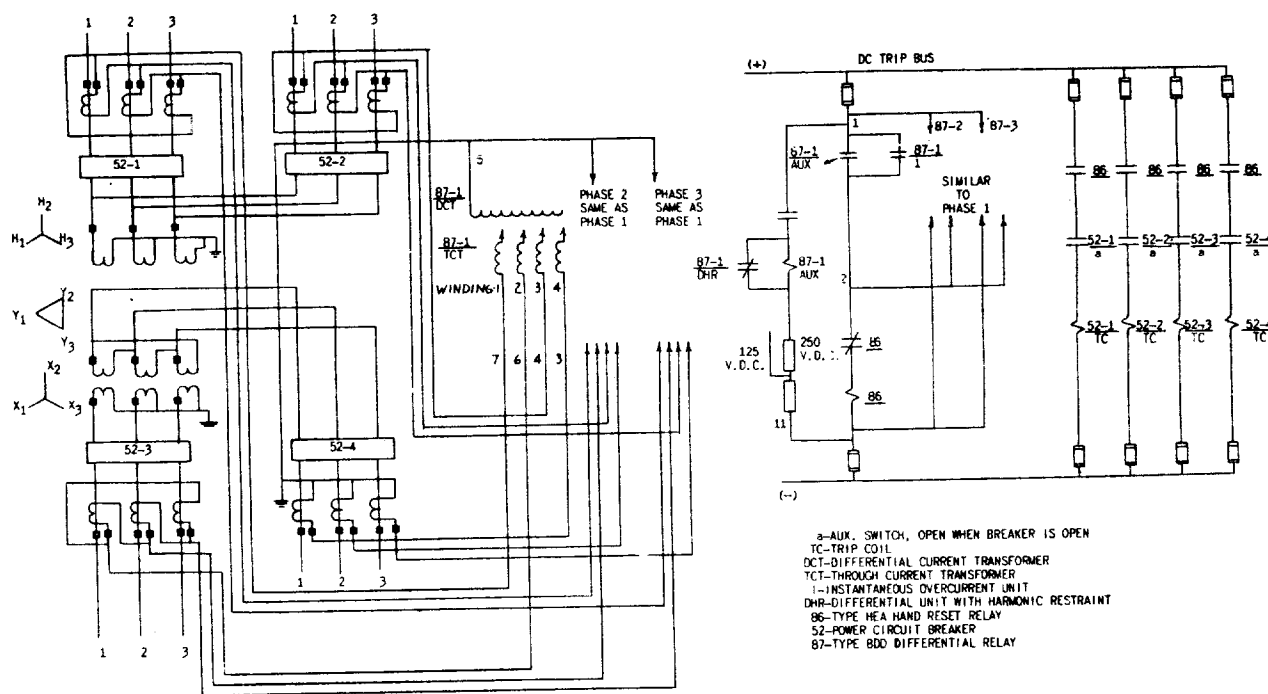


Fig. 3 (0116B6903-4) Elementary Diagram For BDD17B Relay For Four Circuit Transformer Protec

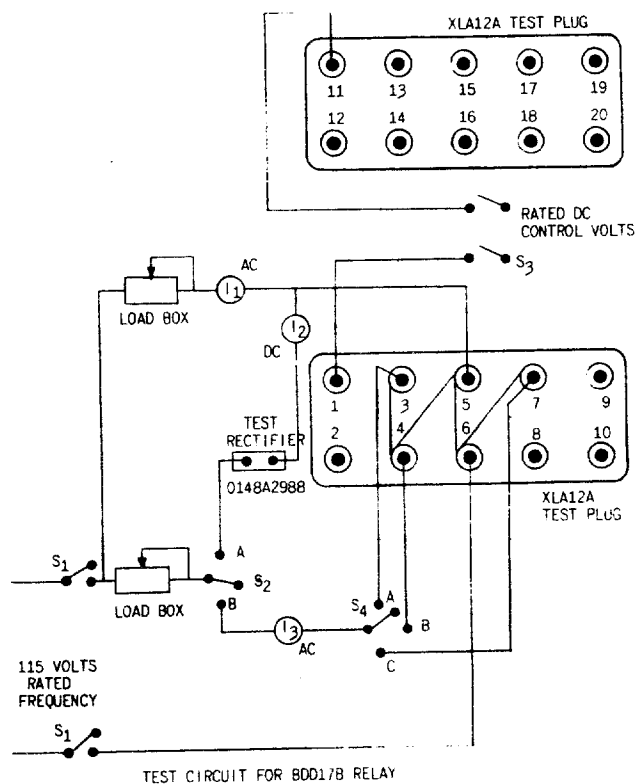


Fig. 4 (418A771-0 sh 3) Test Connections.

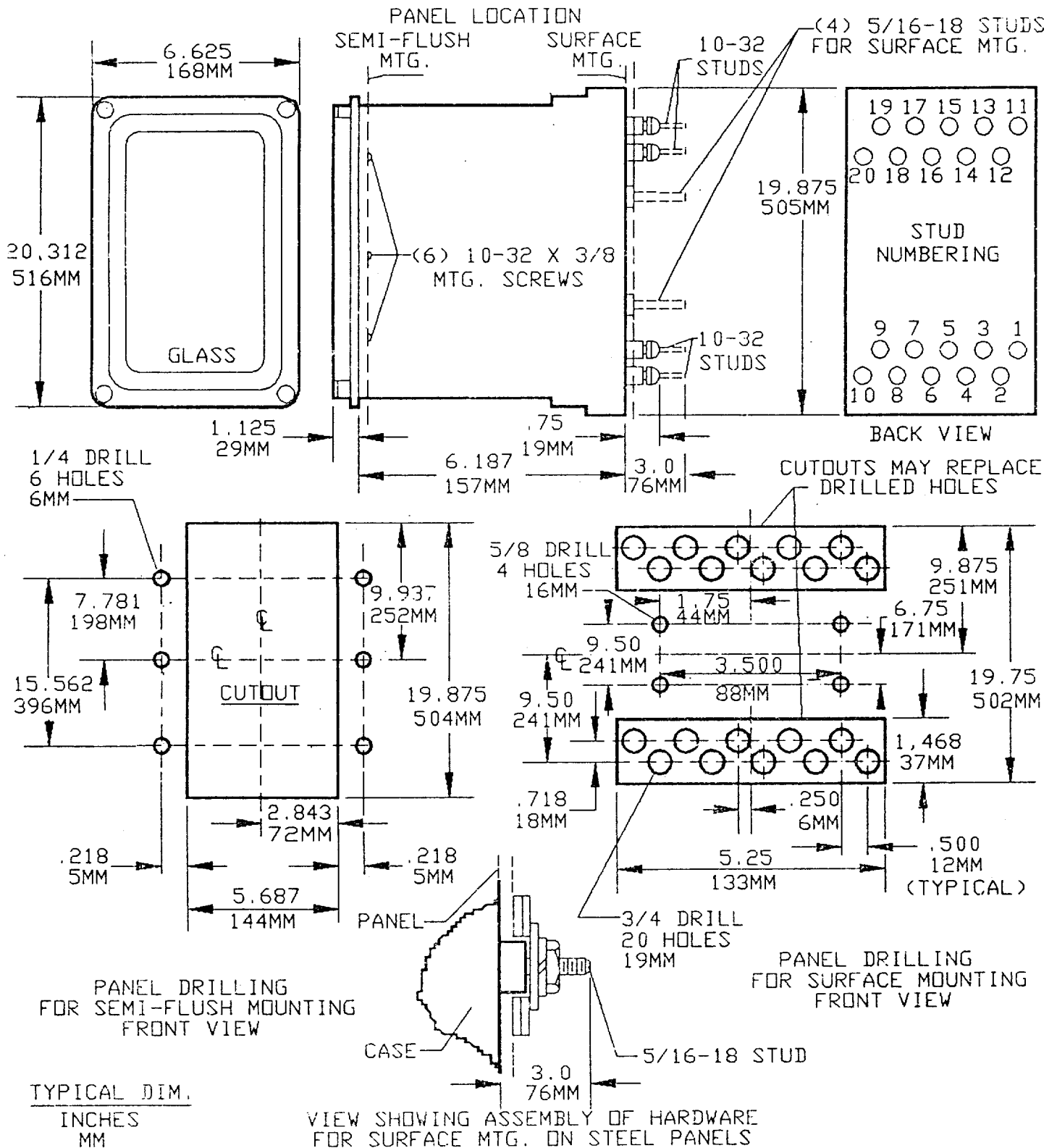


Fig. 5 (6209276 [5]) Outline and Panel Drilling Dimensions for Relay Type BDD178.



GE Power Management

215 Anderson Avenue
Markham, Ontario
Canada L6E 1B3
Tel: (905) 294-6222
Fax: (905) 201-2098
www.ge.com/indsys/pm